

the HAWTHORN

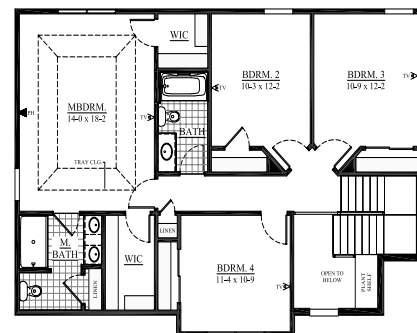


Similar Elevation - 3-Car Garage

2,180 sq. ft.
9496 49th Ct. (lot 45)
Devonshire | Pleasant Prairie
Move In January

All Tim O'Brien Homes are 3rd party tested, certified and exceed the Energy Star® and Green Built Standards. This home is designed to save you **\$34/month** on utility bills,

- Exterior details include stone and shake details, Covered front porch, and **3-Car Garage**.
- Spacious **2-Story Design** with 4 BR and 2.5 BA and Open Concept Design perfect for entertaining.
- Gourmet Kitchen** has Granite Countertops, Staggered Height Cabinets, Island with Overhang Snack Bar, Walk-In Pantry, Stainless Dishwasher & Microwave and Spacious Dinette.
- Great Room** includes a Direct Vent Fireplace with Raised Hearth and Stone Detail and Wall of Windows to bring in the Natural Light.
- Luxury Master Bedroom Suite** has Tray Ceiling, Dual Walk-In Closets, Double Bowl Vanity, and Linen Closet
- Other Highlights** include Flex Room to make your own space, 9-ft First Floor Ceilings, Laminate Floors, Rounded Corners, 6-Panel Pine Doors, Rear Foyer has Drop Zone and Private Laundry with Closet, and Much More!
- Money-Saving Eco-Friendly Features:** York 95% High-Efficiency Furnace, Low-E Windows with Lifetime Warranty, 15-Year Dry Basement Guarantee, Closed-Cell spray foam insulation in Box Sills, Tyvek home wrap, Moen® WaterSense® Vanity Faucets & Shower Heads, and much more.



Call Matt Kawczynski
(414) 587-8089
for a tour!

See the Difference
in the Details!



Building for the way you live

Interested in Building
this High Performance Home,
Call for Pricing!

Visit us online at: TimOBrienHomes.com

N116 W24132 Prairie Court, Suite 220 • Waukesha, WI 53188 • 262-542-5750 • Fax 262-542-9780

Home may be shown with optional features. All measurements are approximate. This information is not guaranteed and is subject to verification by buyer. Builders reserves the right to make changes without notice. Copyright ©2017 Tim O'Brien Homes, Inc.

