

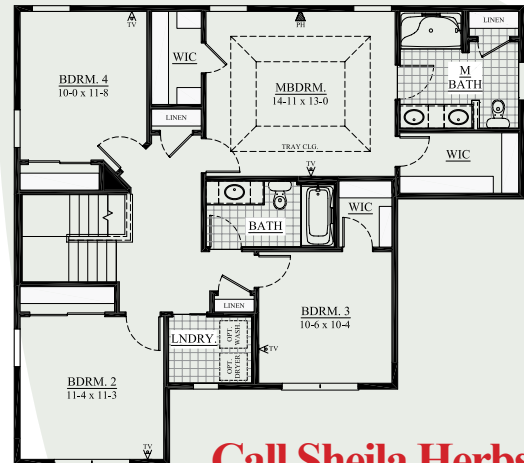
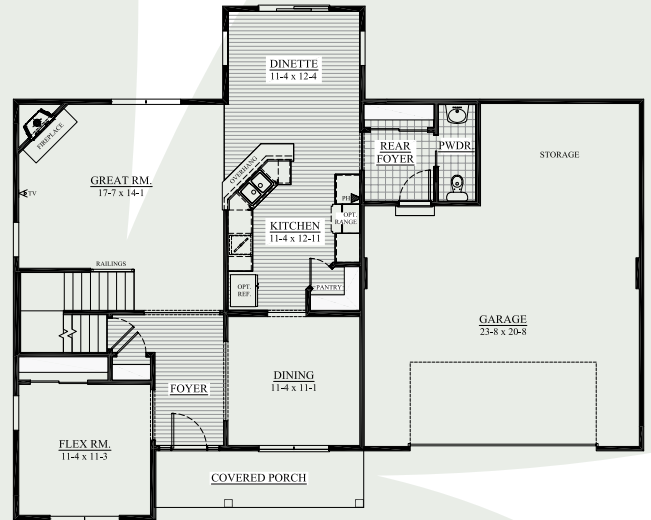
the BUCKEYE



2,280 sq. ft.
1606 Rockridge Way (lot 378)
Rolling Ridge South | Waukesha
Move In February

All Tim O'Brien Homes are 3rd party tested, certified and exceed the Energy Star® and Green Built Standards. This home is designed to save you **\$36/month** on heating/cooling bills.

- Exterior details include stone, covered porch, and **2-Car Garage with extra storage area.**
- Spacious 2-story with 4 BR and 2.5 BA with Open Concept Design - Great for Entertaining.
- Kitchen** has Raised Snack Bar, Granite Countertop, Staggered Height Cabinets with Crown Molding, Walk-In Pantry, and Stainless Dishwasher & Microwave.
- Great Room** includes a Direct Vent Fireplace with Raised Hearth and Stone Detail. Look-out lower level with full bath rough-in for future expansion.
- Luxury Master Bedroom Suite** has Tray Ceiling, His-n-Her Walk-In Closets, Double Bowl Vanity, and Oversize Shower and Linen Closet.
- Other Highlights** include 2nd floor laundry, 9-foot first floor ceilings, Laminate Floors, Rounded Corners, 6-panel pine doors, Arch Door Openings, and Much More!
- Money-Saving Eco-Friendly Features:** York 95% High-Efficiency Furnace, 15-Year Dry Basement Guarantee, Closed-Cell spray foam insulation in Box Sills, Tyvek home wrap, Moen® WaterSense® Vanity Faucets & Shower Heads, and much more.



**See the Difference
in the Details!**

**Interested in Building
this High Performance Home,
Call for Pricing!**

TIM O'BRIEN
homes

Building for the way you live

Visit us online at: TimOBrienHomes.com

Call Sheila Herbst
(262) 744.0933



N16 W24132 Prairie Ct., Suite 220 | Waukesha, WI 53188 | 262.542.5750

All dimensions are approximate. This information is not guaranteed and is subject to verification.
Builder reserves the right to make changes without notice. Copyright 2011 Tim O'Brien Homes, Inc.

