

# the WINTERBURY



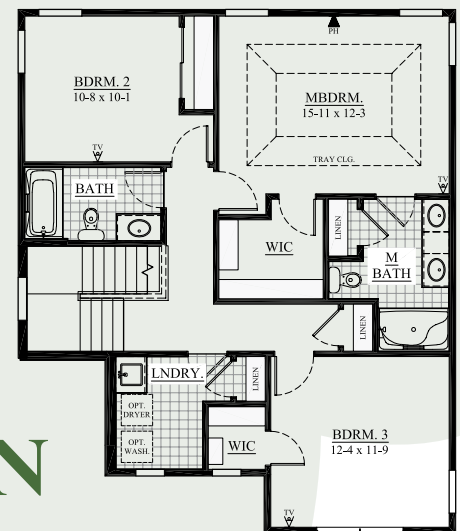
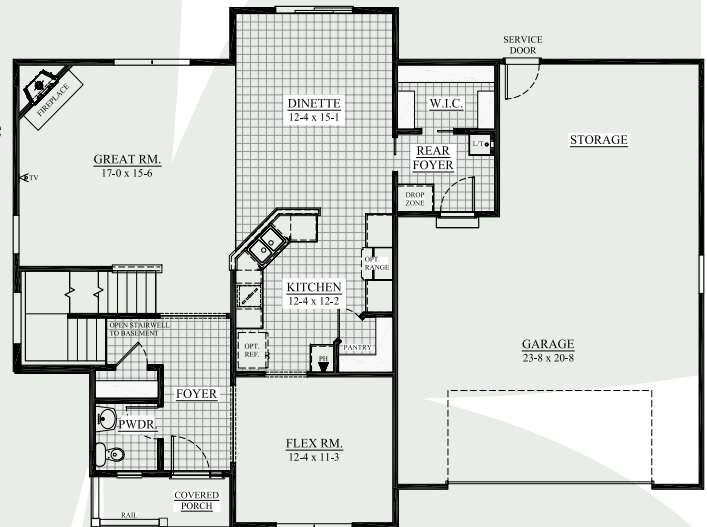
Similar Elevation

2,076 sq. ft.

Look-Out Lower Level  
523 Camarosa Ct. - Lot 4  
Strawberry Creek | Jackson  
Move In April

All Tim O'Brien Homes are 3rd party tested, certified and exceed the Energy Star® and Green Built Standards. This home is designed to save you **\$35/month** on utility bills,

- ✿ Spacious 3 BR and 2.5 BA with **Open Concept Design** with Covered Porch, Custom Stone Detail, and Extra Garage Storage
- ✿ **Functional Kitchen** has Staggered Height Cabinets with Crowning Molding, **Plenty of Storage**, Walk-In Pantry, and Stainless Steel Dishwasher & Microwave
- ✿ Great Room includes a Direct Vent Fireplace with Raised Hearth and **Makes Entertaining Easy**
- ✿ **Relax** in the Master Bedroom Suite with Tray Ceiling, Walk-in Closet, Double Bowl Vanity, Linen Closet and Oversize Shower.
- ✿ Other highlights include **Flex Room** for Dining Room or Study or Whatever You Need it to be, Laminate Flooring, Rounded Corners, White Painted Trim, **Rear Foyer with Drop Zone**, 2nd Floor Laundry with Closet and More!
- ✿ **Money-Saving Eco-Friendly Features:** York 95% High-Efficiency Furnace, Low-E Widows, Closed-Cell spray foam in Box Sills, Tyvek home wrap, and 15-Year Dry Basement Guarantee.



**Call Jackie Guansing  
262.378.9112**

See the Difference in the Details.

Interested in Building this High Performance Plan,  
Call for Pricing!

**TIM O'BRIEN**  
homes

Building for the way you live

Visit us online at: [www.TimOBrienHomes.com](http://www.TimOBrienHomes.com)

**N16 W24132 Prairie Ct., Suite 220 | Waukesha, WI 53188 | 262.542.5750**

All dimensions are approximate. This information is not guaranteed and is subject to verification.  
Builder reserves the right to make changes without notice. Copyright 2011 Tim O'Brien Homes, Inc.

