







the BUCKEYE



-  Exterior details include stone, covered porch, and **2-Car Garage with extra storage area.**
-  Spacious 2-story with 4 BR and 2.5 BA with Open Concept Design - Great for Entertaining.
-  **Kitchen** has Raised Snack Bar, Granite Countertop, Staggered Height Cabinets with Crown Molding, Walk-In Pantry, and Stainless Dishwasher & Microwave.
-  **Great Room** includes a Direct Vent Fireplace with Raised Hearth and Stone Detail. Look-out lower level with half bath rough-in for future expansion.
-  **Luxury Master Bedroom Suite** has Tray Ceiling, His-n-Her Walk-In Closet, Double Bowl Vanity, and Oversize Shower and Linen Closet.
-  **Other Highlights** include 2nd floor laundry, 9-foot first floor ceilings, Laminate Floors, Rounded Corners, 6-panel pine doors, Arch Door Openings, and Much More!

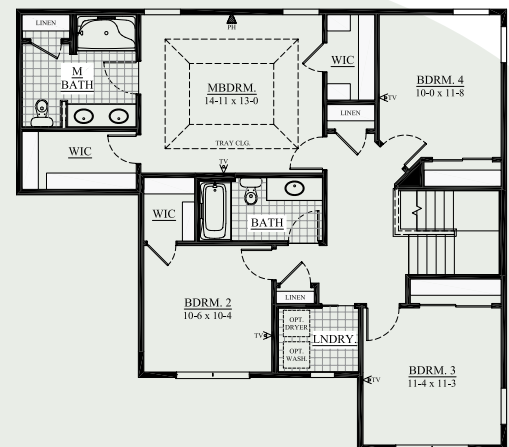
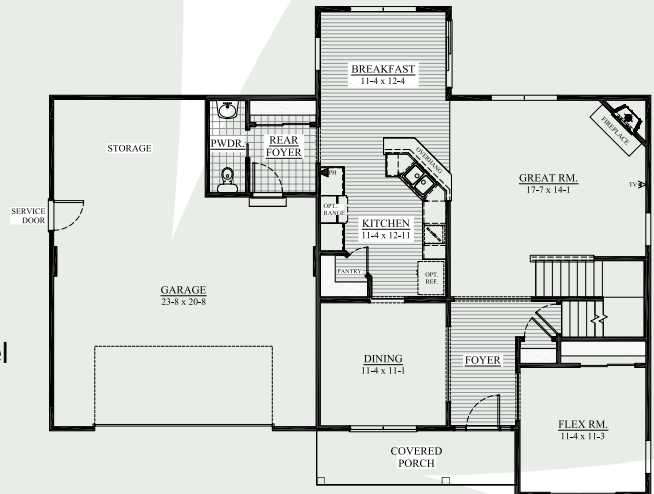
-  **Money-Saving Eco-Friendly Features:** York 95% High-Efficiency Furnace, 15-Year Dry Basement Guarantee, Closed-Cell spray foam insulation in Box Sills, Tyvek home wrap, Moen® WaterSense® Vanity Faucets & Shower Heads, and much more.

See the Difference in the Details!

Interested in Building this High Performance Home, Call for Pricing!

2,280 sq. ft.
3105 Sherman Parc Cir. (lot 43)
Sherman Parc | Jackson
Move In January

All Tim O'Brien Homes are 3rd party tested, certified and exceed the Energy Star® and Green Built Standards. This home is designed to save you **\$35/month** on utility bills,



TIM O'BRIEN homes
Building for the way you live

Visit us online at: TimOBrienHomes.com

Call Jackie Guansing
(262) 378-9112



N16 W24132 Prairie Ct., Suite 220 | Waukesha, WI 53188 | 262.542.5750

All dimensions are approximate. This information is not guaranteed and is subject to verification. Builder reserves the right to make changes without notice. Copyright 2011 Tim O'Brien Homes, Inc.

