

the CYPRESS

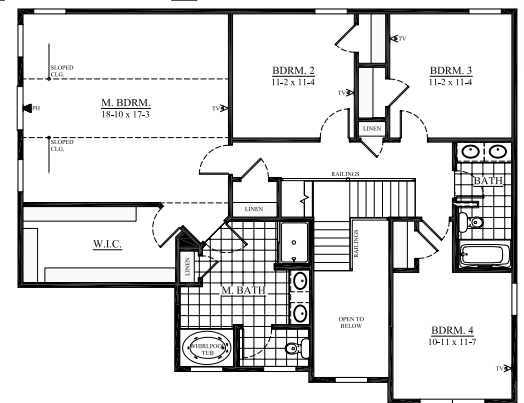


Similar Elevation

2,666 sq. ft.
 Look-Out Lower Level
 735 Wolf Creek Court (lot 4)
 Waterstone, Grafton
 Move In January

All Tim O'Brien Homes are 3rd party tested, certified and exceed the Energy Star® and Green Built Standards. This home is designed to save you **\$43/month** on utility bills,

- ✿ Spacious **2-Story Design** with 4 BR and 2.5 BA with Open Concept Design
- ✿ **Gourmet Kitchen** has Granite Countertops, Staggered Height Cabinets, Snack Bar, Walk-In Pantry, and Stainless Steel Dishwasher and Microwave.
- ✿ **Great Room** includes a 40" Direct Vent Fireplace with Raised Hearth, Arch Niche above Mantel, Stone to ceiling; and Wall of Windows
- ✿ Increase Your Living Space with **Look-Out Lower Level** providing Future Expansion.
- ✿ **Luxury Master Suite** has Vaulted Ceiling, Huge Walk-in Closet, Double Bowl Vanity, Shower, Whirlpool Tub, Ceramic Flooring and Water Closet
- ✿ **Other Highlights** include Dining Room with Tray Ceiling, Flex Room to make your own, 3-Car Garage, Hardwood Floors, Rounded Corners, Maple Rails with Wrought Iron Spindles, Large Rear Foyer has Drop Zone, WIC, and Spacious Laundry Room, 9' First Floor Ceilings, Hardwood Flooring and More!

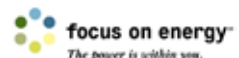


- ✿ **Money-Saving Eco-Friendly Features:** York 95% High-Efficiency Furnace, Closed-Cell spray foam insulation in Box Sills, Tyvek home wrap, Moen® WaterSense® Vanity Facuets & Shower Heads, and much more.

Call Jackie Guansing
262.378.9112
for a tour!



Building for the way you live



See the Difference
 in the Details!

Interested in Building this Home,
 call for Pricing!

Visit us online at: TimOBrienHomes.com

N16 W24132 Prairie Court, Suite 220 • Waukesha, WI 53188 • 262-542-5750 • Fax 262-542-9780

Home may be shown with optional features. All measurements are approximate. This information is not guaranteed and is subject to verification by buyer. Builders reserves the right to make changes without notice. Copyright 2010 Tim O'Brien Homes, Inc.