

the HAWTHORN



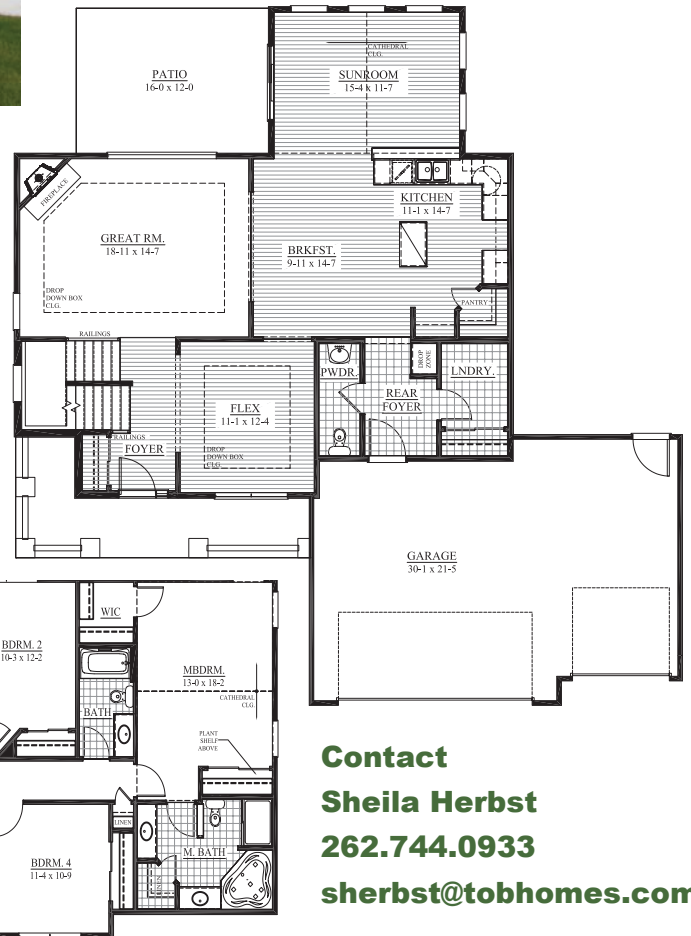
FOR SALE - \$389,900

2,287 Square Feet
4 Bedrooms, 2.5 Bathrooms
1700 Coldwater Creek Dr
Rolling Ridge South, Waukesha
Ready for Move-in!

This spacious open-concept 2-story floor plan features exterior custom stone work and a large covered porch. The upper **master suite** has his-n-hers closets and a **luxury private bathroom**. The **gourmet kitchen** with ample countertop space, walk-in pantry, and center island is open to the bright **sunroom** and spacious **great room**. This home includes **flex space** to make your own, and a **rear foyer** with **private laundry room**.

Other luxury details include: gas fireplace with raised hearth and custom stone detail, rounded drywall corners, stained trim work, whirlpool tub with separate shower and double bowl vanity in master bathroom, tray ceiling in master suite, quartz countertops and staggered height cabinets in the kitchen, 3-car garage, rounded archways, a finished lower level with egress windows, professional landscaping, and so much more!

Eco-friendly & green features that SAVE you MONEY, ENERGY & WATER: York 95% High-Efficiency Furnace, Low-E Windows with Lifetime Warranty, Closed-Cell spray foam insulation in Box Sills, Tyvek home wrap taped & sealed, and Moen WaterSense Vanity Faucets & Shower Heads.



Contact
Sheila Herbst
262.744.0933
sherbst@tobhomes.com



All Tim O'Brien Homes are designed to save on utility bills and are 3rd party tested, certified and exceed the Energy Star® and Green Built Standards.

TIM O'BRIEN
 homes

Main Office - 262.542.5750 • TimOBrienHomes.com



Builder reserves the right to make changes without notice. The HERS Index (Home Energy Rater System) is a scoring system established by the Residential Energy Services Network and involves an analysis of a home's construction plans and onsite inspections. Copyright 2010 Tim O'Brien Homes, Inc.