

the HAWTHORN



MODEL FOR SALE - \$289,900

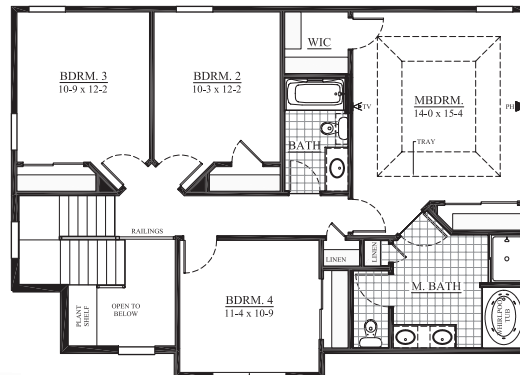
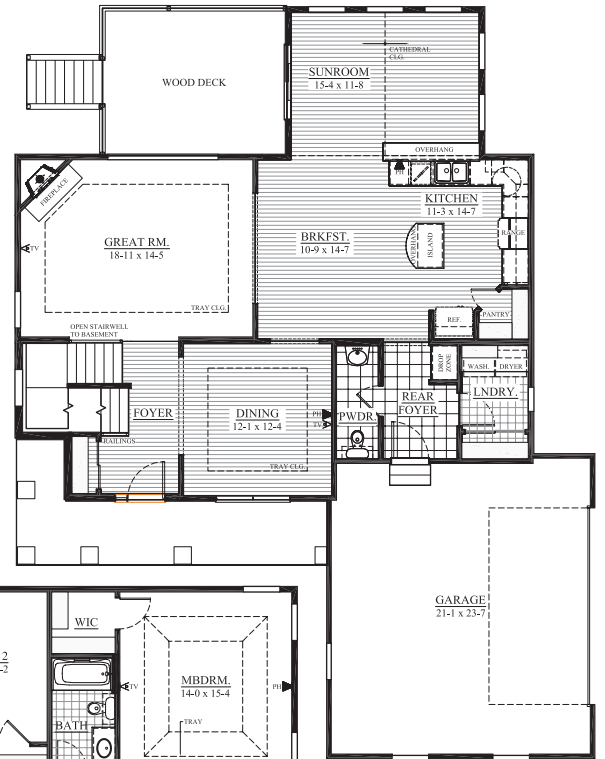
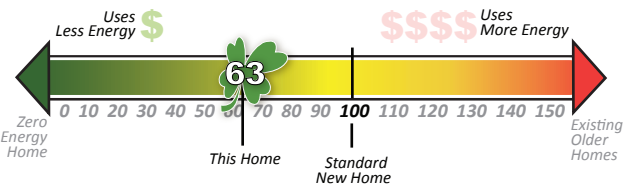
2,349 Square Feet
 4 Bedrooms, 2.5 Bathrooms
 2926 16th Place - Lot 51
 Meadows at Hunter's Ridge, Kenosha

**OPEN HOURS: Friday - Tuesday,
 Noon - 5:00 and by appointment**

See the Difference in the Details: This spacious 2-story floor craftsman-style plan features exterior custom stone work and basement look-out exposure. The upper **master suite** has his-n-hers closets and a **luxury private bathroom**. The **gourmet kitchen** with ample countertop space, walk-in pantry, and center island is open to the sunny **dinette** and spacious **great room**. This home includes a large **rear deck** for entertaining, a cheerful **sunroom** with cathedral ceilings, a formal **dining room**, and a **rear foyer** with **private laundry room**.


Other luxury details include: gas fireplace with raised hearth, rounded drywall corners, maple hardwood floors, whirlpool tub and double bowl vanity in master bathroom, tray ceiling in master suite, additional square footage in the garage for extra storage, rounded archways, and so much more!

Eco-friendly & green features that SAVE you MONEY, ENERGY & WATER: York 95% High-Efficiency Furnace, Low-E Windows with Lifetime Warranty, Closed-Cell spray foam insulation in Box Sills, Tyvek home wrap taped & sealed, and Moen WaterSense Vanity Faucets & Shower Heads.



**Contact
 Matt Kawczynski
 414.587.8089**

The Hawthorn is designed to save \$64.00/month on utility bills and is 3rd party tested, certified and exceeds the Energy Star® and Green Built Standards. This home scored a 63 on the Home Energy Rating Standard Index.



TIM O'BRIEN
 homes

Main Office - 262.542.5750 • TimOBrienHomes.com



focus on energy
 Partnering with Wisconsin utilities

Builder reserves the right to make changes without notice. The HERS Index (Home Energy Rating System) is a scoring system established by the Residential Energy Services Network and involves an analysis of a home's construction plans and onsite inspections. Copyright 2010 Tim O'Brien Homes, Inc.