

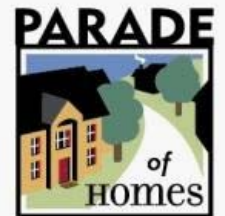


SOLD

5,270 sq. ft.

1st Floor Master Suite Design

N37 W23860 Broken Hill Circle (Lot 40)



DESIGN FEATURES

- ▶ 1st Floor Master Design with 3 Bedrooms/3 Baths upstairs, and Bedroom/Full Bath in Finished Lower Level.
- ▶ Kitchen features a Walk-In Prep Pantry; Snack Bar; Furniture-Type Island with vegetable sink and built-in shelves; decorative range hood; and ceiling details. Open to Great Room and Dinette for easy entertaining.
- ▶ Private Luxury Master Suite Wing with gorgeous bathroom highlighting a whirlpool tub with columns, his-n-her vanities, ceramic tile shower with dual faucet heads, private water closet; and walk-in closet offering his-n-her areas, built-in ironing board, and space saving washer/dryer.
- ▶ Two-story Great Room is spacious yet cozy and features direct vent wood-burning fireplace with beautiful stone detail, wall of sliding glass windows let in the natural light.
- ▶ Raised study with coffered ceilings, French doors for privacy, and tons of natural light. Fantastic Rear Foyer has Drop Zone, lockers, oversize closet, and Powder Room.
- ▶ 2nd floor has private guest suite. Catwalk connects 2 additional bedrooms with walk-in closets & baths; Laundry Room; and Tech Area.
- ▶ Finished Look-Out Lower Level with Rec Room, Bedroom and Full Bath, and area for Wine Cellar.

ECO-FRIENDLY FEATURES

- ▶ Geothermal Heating and Cooling - 400% efficient
- ▶ PVC (photovoltaic system) 7.75 KW Solar Panel System
- ▶ Hybrid Direct Vent Water Heater (uses gas & electric)
- ▶ EPA WaterSense fixtures and Dual Flush Toilets
- ▶ Healthy Home Package
- ▶ LED Lighting Package
- ▶ Recycled up to 60% of Construction Waste
- ▶ ENERGY STAR® & EPA Rated Natural Fireplace
- ▶ Advanced Eco Seal Air Sealant
- ▶ 3D Max 6x e-coding Milgard Windows with Lifetime Warranty
- ▶ Radiant floor heat in basement floor utilizing the Geothermal System
- ▶ Use of No and Low VOC paints & stains
- ▶ Lyptus Kitchen cabinets - made from quick growing trees
- ▶ Durable Fiber cement siding made with recycled content
- ▶ Advanced Fiberglass Wall Insulation (R24)
1st use of Product in the U.S.



QUALIFIED PROJECT
**National Green Building Standard
Gold Certified Home**

Visit us online at: TimOBrienHomes.com

N16 W24132 Prairie Court, Suite 220 • Waukesha, WI 53188 • 262-542-5750 • Fax 262-542-9780

Home may be shown with optional features. All dimensions are approximate. This information is not guaranteed and is subject to verification by buyer. Builder reserves the right to make changes without notice. Copyright 2007 Tim O'Brien Homes, Inc.



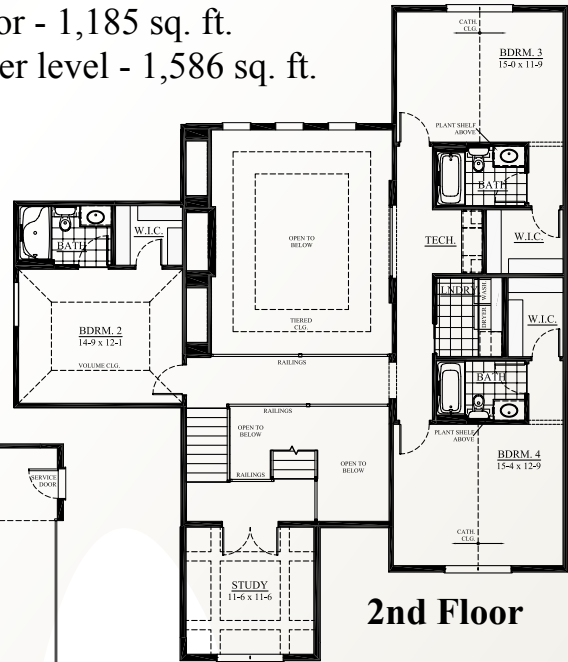


Total Living Space - 5,270 sq. ft.

1st floor - 2,499 sq. ft.

2nd floor - 1,185 sq. ft.

Finished lower level - 1,586 sq. ft.



**Call for a Tour
(262) 542-5750**

Look-Out Lower Level



This spacious Parade Home showcases the ultimate in green building practices, resource conservation, durable/sustainable materials, renewable technologies, energy efficiency, aging-in-place elements, and innovative features.



Visit us online at: TimOBrienHomes.com

N16 W24132 Prairie Court, Suite 220 • Waukesha, WI 53188 • 262-542-5750 • Fax 262-542-9780

Home may be shown with optional features. All dimensions are approximate. This information is not guaranteed and is subject to verification by buyer. Builder reserves the right to make changes without notice. Copyright 2007 Tim O'Brien Homes, Inc.