

# the ALPINE



**MODEL FOR SALE - \$434,900**

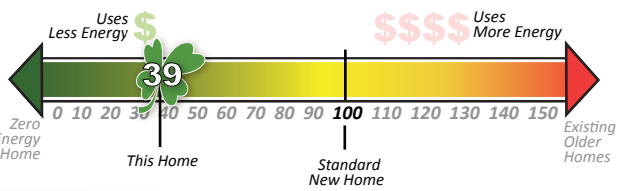
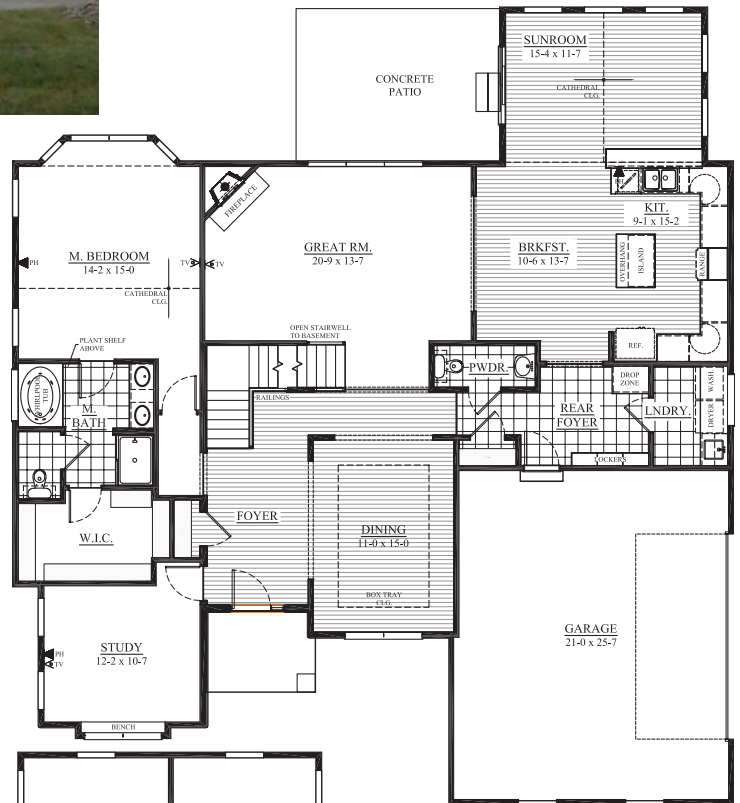
**2,700 Square Feet  
4 Bedrooms, 2.5 Bathrooms  
W227 N4346 Bridge Street - Lot 7  
Victoria Station, Pewaukee**

**OPEN HOURS: Friday - Tuesday,  
Noon - 5:00 and by appointment**

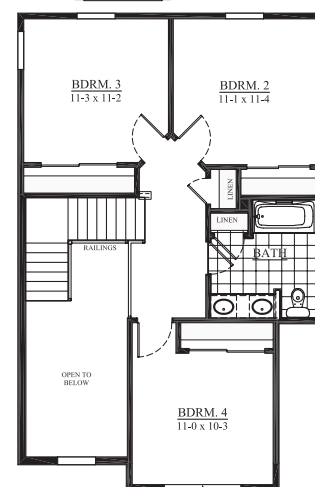
The Alpine is a spacious two-story with Craftsman details, exterior custom stone work and covered front porch. The 1st floor **master suite** has a **luxury private bath** with whirlpool tub and huge walk-in closet, and is situated near the **private study**. The open-concept **gourmet eat-in kitchen** offers ample counter space, center island, and snack bar and is connected to a bright **sunroom** and the **great room**. This home includes a **rear foyer** with a **drop-zone, built-ins, and private laundry room**.

**Other luxury details include:** cathedral ceilings in the master bedroom, dual vanity bowls in the master suite bathroom, rounded drywall corners, Quartz kitchen countertops, 30-year dimensional shingles, 9' ceilings on the first floor, 42" direct vent gas fireplace with raised hearth and custom stone work, rounded archways, Tigerwood wood floors, and so much more!

**Eco-friendly & green features that SAVE you MONEY, ENERGY & WATER:** 4-ton geothermal HVAC system, 3kW solar electric system, low-E windows with lifetime warranty, closed-cell spray foam insulation in box sills, Tyvek home wrap taped & sealed, energy-efficient appliances, R-50 attic insulation, EPA WaterSense fixtures.



**The Alpine is designed to save \$117.00/month on utility bills and is 3rd party tested, certified and exceeds the Energy Star® and Green Built Standards. This home scored a 39 on the Home Energy Rating Standard Index.**



**TIM O'BRIEN**  
homes

**Contact  
Matt Petushek  
760.900.5082  
mpetushek@tobhomes.com**

**Main Office - 262.542.5750  
TimOBrienHomes.com**

Builder reserves the right to make changes without notice. The HERS Index (Home Energy Rater System) is a scoring system established by the Residential Energy Services Network and involves an analysis of a home's construction plans and onsite inspections. Copyright 2010 Tim O'Brien Homes, Inc.