

# The Azalea

Bristol Gardens Happy Valley Addition

TIM O'BRIEN  
homes

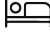
Call Today  
(608) 401-4769

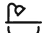


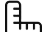
## Call for Price

**Home Style:** First Floor Primary

3 Elevations Available

 4 - 5 Bedroom

 2.5 - 4 Bathrooms

 3,003 Sq. Ft.

 2 - 3 Car Garage

 46 HERS Score

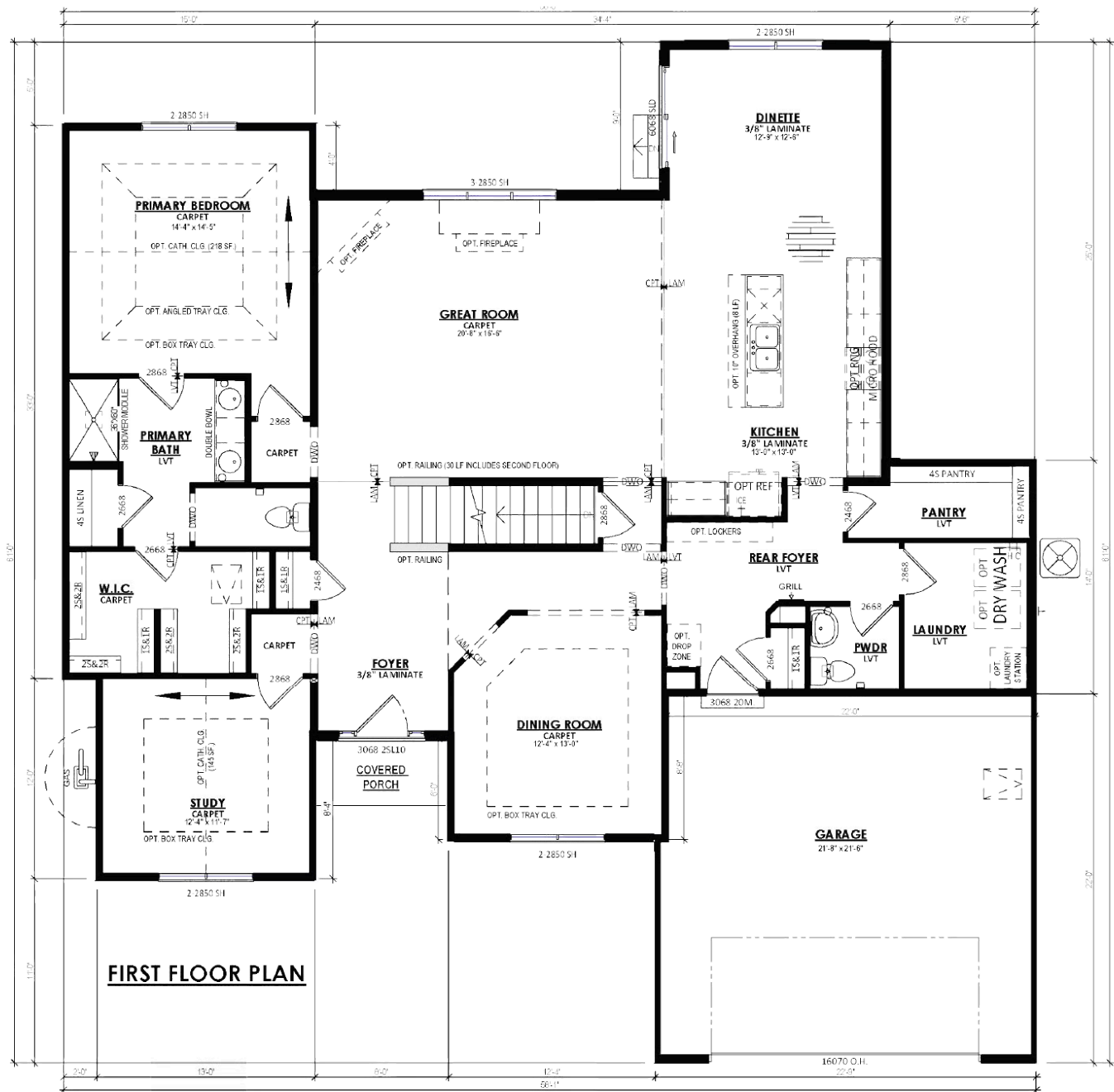
The Azalea features a distinctive design with a first-floor Primary Suite and impressive two-story Foyer and Great Room. One section houses a versatile Flex Room and the Primary Suite, which includes a spacious walk-in closet accessed through the functional Bathroom. The opposite wing contains a practical Kitchen and efficient Rear Foyer with pantry, Powder Room, and Laundry Room.

The central area of the main floor incorporates a dedicated dining space, the volumetric Great Room with elevated ceilings, and a staircase ascending to the second floor. Upstairs, the layout provides three additional bedrooms, each featuring walk-in closets. The upper level is enhanced by a loft area and an open walkway that overlooks the Great Room below.



The information, text, graphics and links provided herein are provided by Tim O'Brien Homes as a convenience to its customers. Tim O'Brien Homes does not guarantee the accuracy or completeness of the information, text, graphics, links and other items contained on this website or any other website. All prices, promotions and specifications are subject to change at any time without notice based on the discretion of Tim O'Brien Homes.





# Bristol Gardens Happy Valley Addition

**TIM O'BRIEN<sup>®</sup>**  
*homes*

**Call Today**  
**(608) 401-4769**

