

The Holly

The Preserve at Oakland

TIM O'BRIEN
homes

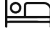
Call Today
(608) 480-5963



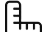
Call for Price

Home Style: Ranch

3 Elevations Available

 3 - 4 Bedroom

 2.5 Bathrooms

 1,972 Sq. Ft.

 2 - 3 Car Garage

 46 HERS Score

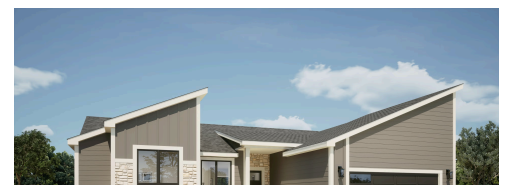
The Holly is a thoughtfully designed ranch that blends everyday comfort with flexible living spaces-perfect for both quiet routines and hosting friends and family.

At the heart of the home, the open-concept kitchen, dinette, and great room create a bright, welcoming space that flows effortlessly. The kitchen features a large island, generous pantry storage, and clear sightlines to the dinette and great room, making it ideal for casual meals or entertaining. Just off the foyer, a versatile flex room offers the flexibility to serve as a home office, playroom, or hobby space.

The primary bedroom is tucked away from the secondary bedrooms and includes a spacious walk-in closet and a well-appointed bath for a relaxing retreat. Two additional bedrooms share a hall bath, providing comfortable accommodations for family members or guests.

Everyday functionality shines with a rear foyer entry from the garage, complete with a nearby powder room and a convenient laundry space-perfect for keeping life organized. A covered front porch adds curb appeal and a cozy spot to enjoy morning coffee or evening sunsets.

With its smart layout, open living spaces, and flexible rooms, **the Holly** is designed to adapt to your lifestyle while feeling warm, welcoming, and easy to live in.



The information, text, graphics and links provided herein are provided by Tim O'Brien Homes as a convenience to its customers. Tim O'Brien Homes does not guarantee the accuracy or completeness of the information, text, graphics, links and other items contained on this website or any other website. All prices, promotions and specifications are subject to change at any time without notice based on the discretion of Tim O'Brien Homes.





First Floor