

# 538 Buss Road

Cottage Grove, WI 53527

TIM O'BRIEN  
homes

Call Today  
(608) 401-4769

UNDER CONSTRUCTION



PRICED AT

## \$634,900

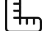
**Neighborhood:** Shady Grove


3190 Drumlin Rdg Dr, Cottage Grove, WI

**Home Plan:** The Evergreen

 4 Bedrooms

 2.5 Bathrooms

 2,432 Sq. Ft.

 2 Car Garage

Energy Efficient NEW CONSTRUCTION! The Evergreen home plan offers 2-story open-concept living w/ a 3 car garage & tons of curb appeal in this charming home! The main level boasts a spacious flex room with double doors off the large foyer. Great Room w/ Fireplace is open to the spacious Kitchen & Dining Room that are ideal for hosting. Kitchen offers a large walk in pantry. No shortage of storage with 2 additional closets on main level including a large walk-in closet off the spacious rear foyer. Upstairs offers 4 bedrooms, including a large Primary retreat w/ TWO large walk in closets & luxury en-suite bath w/ tile shower & dual vanity. Convenient 2nd floor laundry room. Egress window in the basement for future finish potential.

# 538 Buss Road

Cottage Grove, WI 53527

TIM O'BRIEN  
homes

Call Today  
(608) 401-4769



The information, text, graphics and links provided herein are provided by Tim O'Brien Homes as a convenience to its customers. Tim O'Brien Homes does not guarantee the accuracy or completeness of the information, text, graphics, links and other items contained on this website or any other website. All prices, promotions and specifications are subject to change at any time without notice based on the discretion of Tim O'Brien Homes.

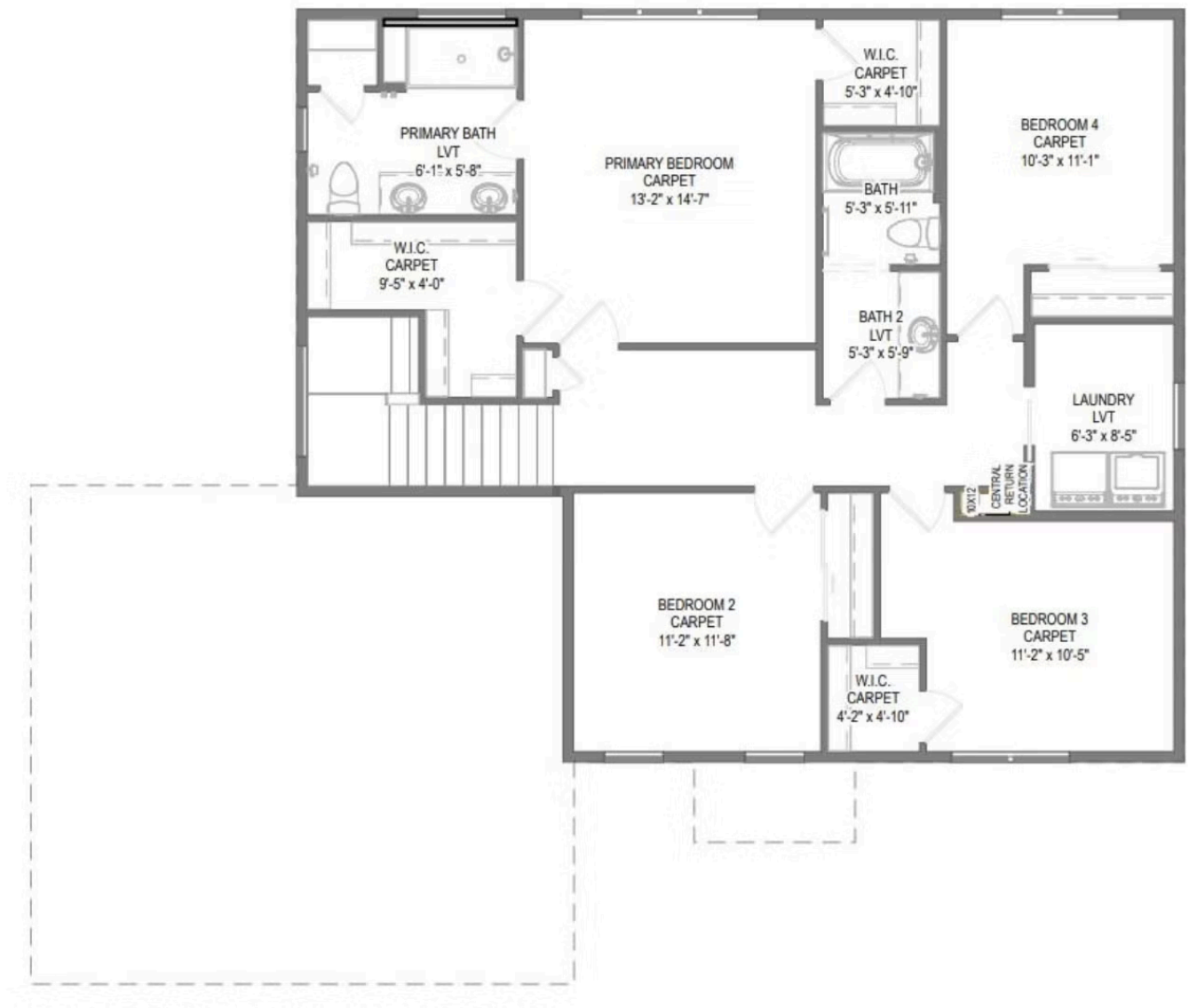


# 538 Buss Road

Cottage Grove, WI 53527

TIM O'BRIEN  
homes

Call Today  
(608) 401-4769



Second Floor