

The Juneberry

Shady Grove

TIM O'BRIEN
homes

Call Today
(608) 401-4769



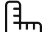
Call for Price

Home Style: Two-Story

3 Elevations Available

 4 Bedroom

 2.5 Bathrooms

 2,590 Sq. Ft.

 2 - 3 Car Garage

 46 HERS Score

The Juneberry home plan blends thoughtful design with everyday functionality across two spacious levels. The open-concept main floor features a large kitchen with an oversized island, walk-in pantry, and seamless connection to the great room, creating an ideal layout for entertaining or daily living. A private flex room near the front entry offers the perfect space for a home office, playroom, or quiet retreat, while the rear foyer keeps everyday organization simple and convenient.

Upstairs, the primary bedroom includes a spacious walk-in closet and a well-appointed bath with dual sinks, a soaking tub, and a separate shower. Three additional bedrooms, a centrally located family room, and second-floor laundry provide plenty of room for growing families or guests. With flexible living spaces, smart storage, and a comfortable flow throughout, the Juneberry offers a layout designed to fit a variety of lifestyles.



The information, text, graphics and links provided herein are provided by Tim O'Brien Homes as a convenience to its customers. Tim O'Brien Homes does not guarantee the accuracy or completeness of the information, text, graphics, links and other items contained on this website or any other website. All prices, promotions and specifications are subject to change at any time without notice based on the discretion of Tim O'Brien Homes.

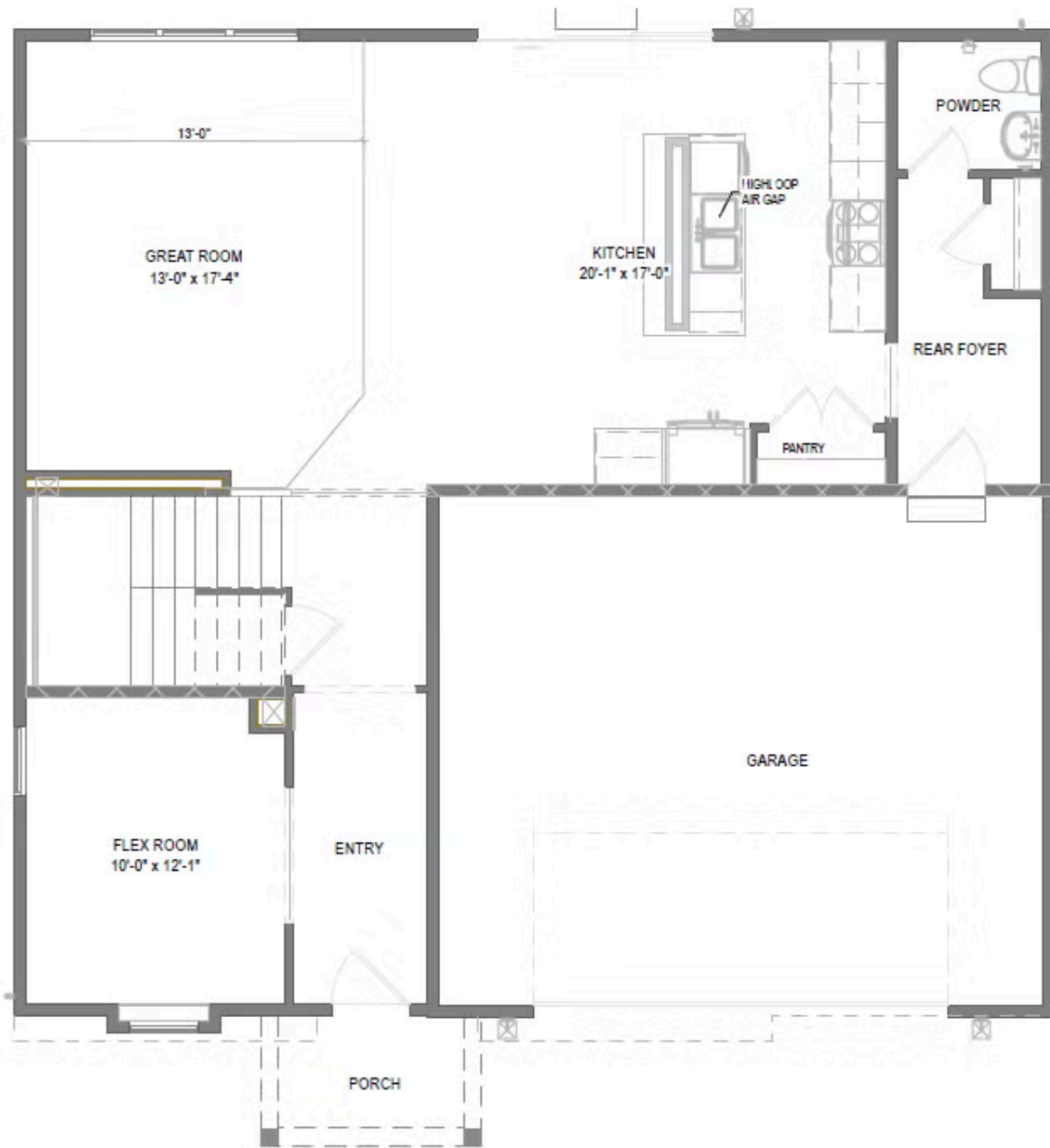


The Juneberry

Shady Grove

TIM O'BRIEN
homes

Call Today
(608) 401-4769



First Floor

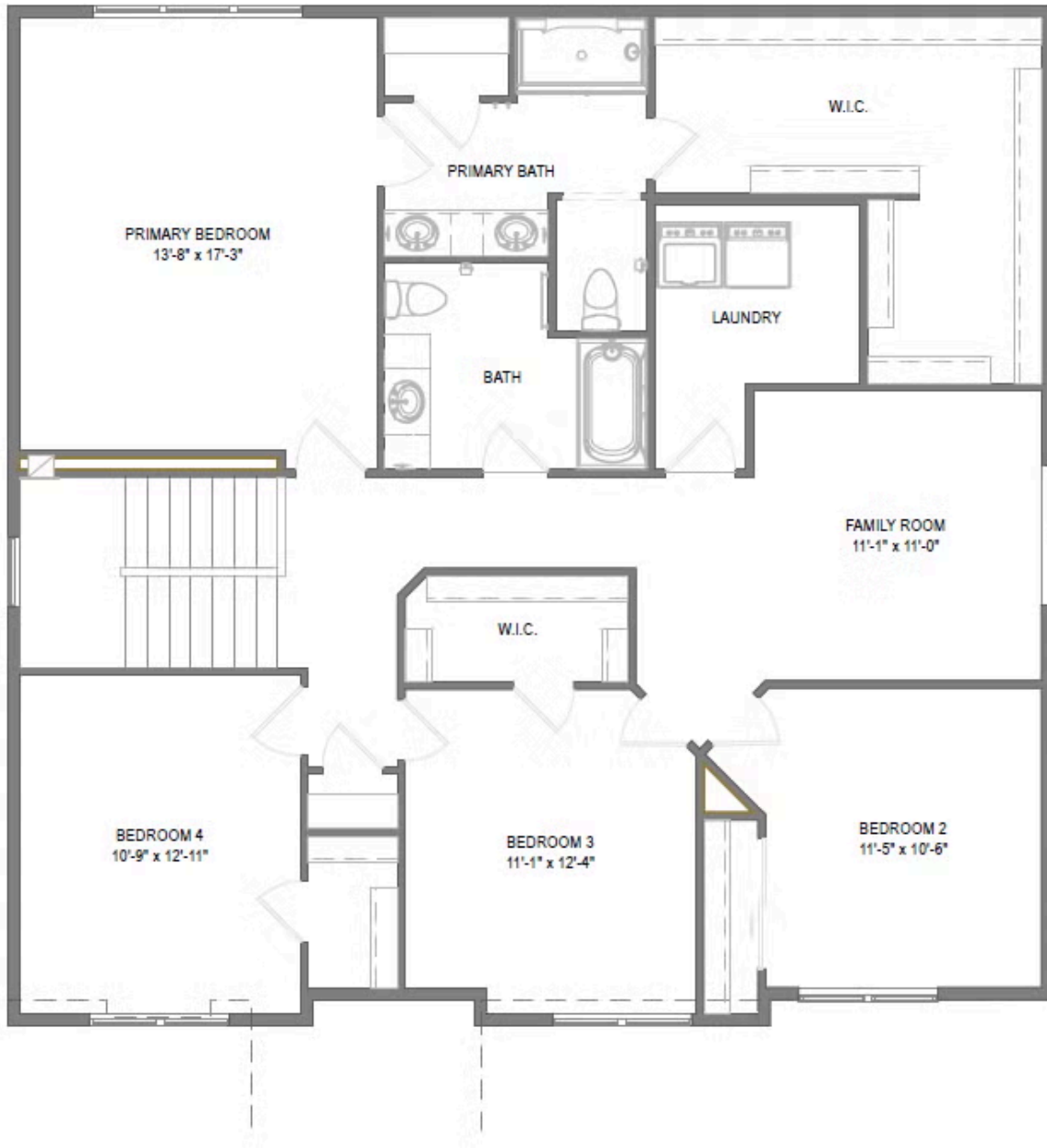
The information, text, graphics and links provided herein are provided by Tim O'Brien Homes as a convenience to its customers. Tim O'Brien Homes does not guarantee the accuracy or completeness of the information, text, graphics, links and other items contained on this website or any other website. All prices, promotions and specifications are subject to change at any time without notice based on the discretion of Tim O'Brien Homes.



The Juneberry

Shady Grove

Call Today
(608) 401-4769



Second Floor