

546 Buss Road

Cottage Grove, WI 53527

TIM O'BRIEN
homes

Call Today
(608) 401-4769

MODEL HOME



PRICED AT


\$724,900

Neighborhood: Shady Grove
3190 Drumlin Rdg Dr, Cottage Grove, WI

Home Plan: The Monterey

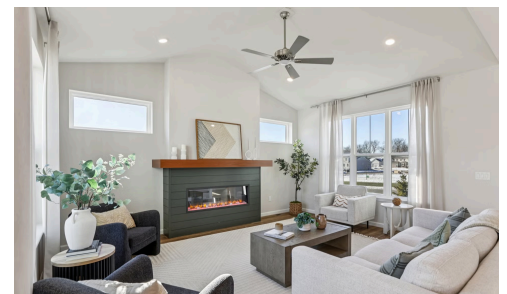
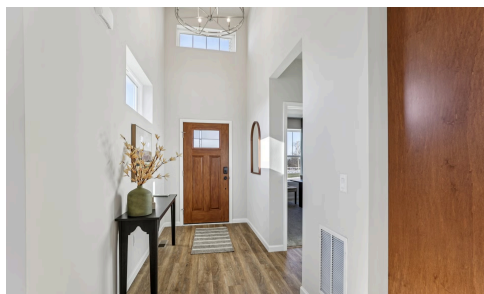
 5 Bedrooms

 3.0 Bathrooms

 2,527 Sq. Ft.

 3 Car Garage

Tim O'Brien Homes 2024 Fall Parade of Homes model. Welcome to this spacious 5-bedroom, 3-bath home. You're greeted by an impressive 2-story foyer. Enjoy living in this inviting open-concept layout. Great Room boasts cathedral ceilings and is anchored by a cozy fireplace. The huge kitchen is a chef's dream and perfect for entertaining. The bright dining area creates a comfortable space for both everyday living and entertaining. Plenty of storage with a walk-in pantry, huge laundry room and rear foyer with large walk-in closet. A bedroom and full bath on the main level make this home spacious and functional. Upstairs find 4 more bedrooms including a luxurious primary suite w/ large walk-in closet, and en-suite bath: your personal retreat at the end of the day. Plenty of space in the 3-car garage. This coveted homesite boasts a spacious deck and patio overlooking the beautiful yard that is ideal for pets, play, and relaxation rounding out this exceptional home.



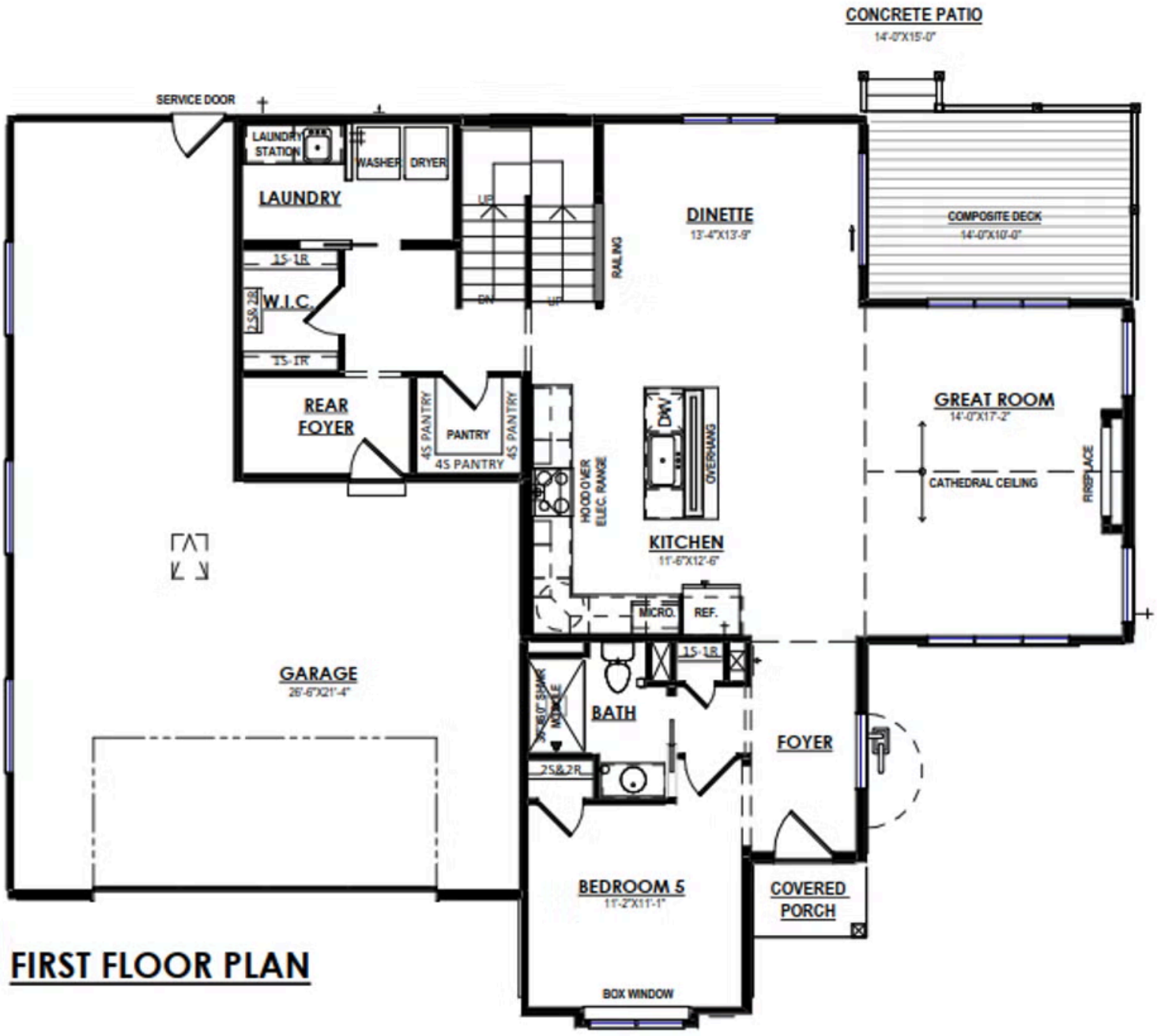
The information, text, graphics and links provided herein are provided by Tim O'Brien Homes as a convenience to its customers. Tim O'Brien Homes does not guarantee the accuracy or completeness of the information, text, graphics, links and other items contained on this website or any other website. All prices, promotions and specifications are subject to change at any time without notice based on the discretion of Tim O'Brien Homes.



546 Buss Road

Cottage Grove, WI 53527

Call Today
(608) 401-4769

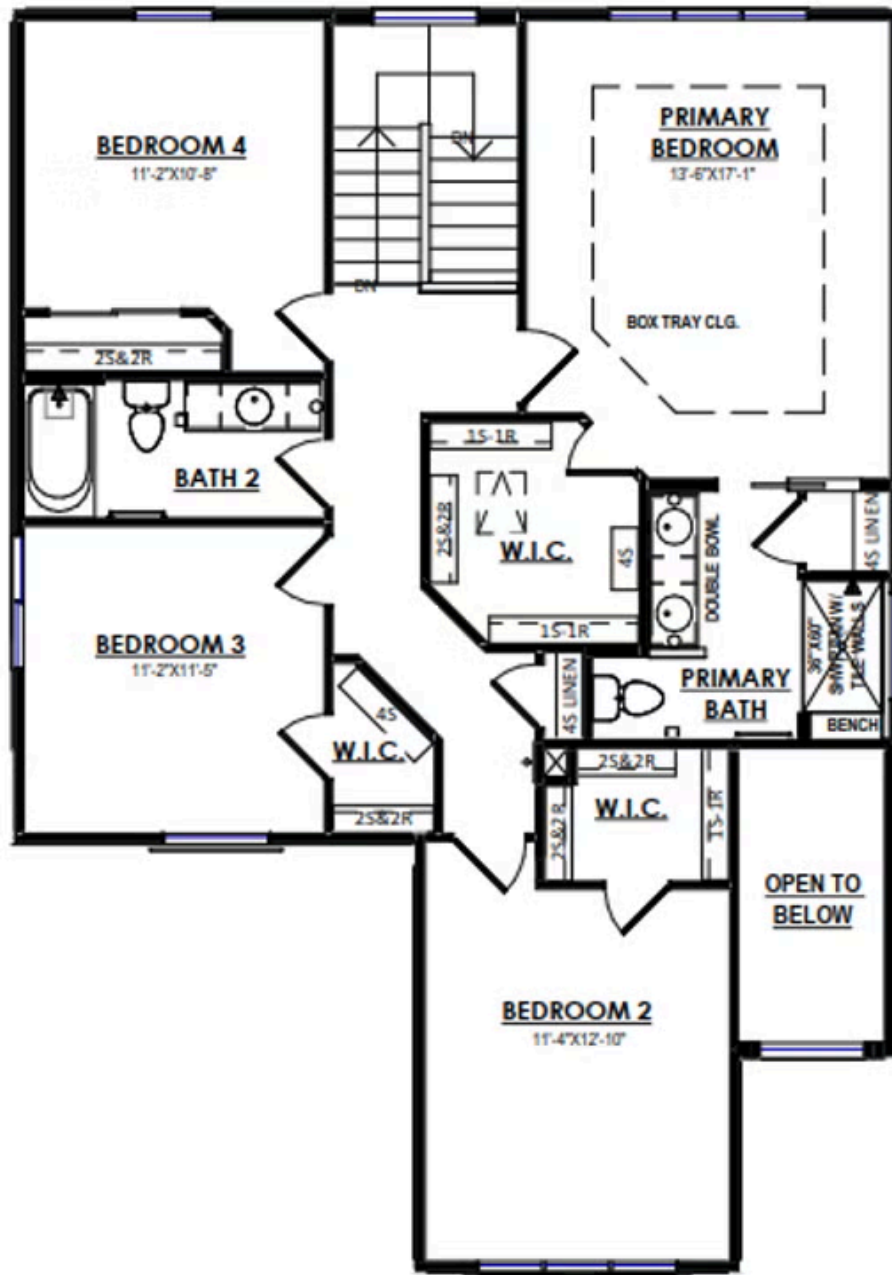


FIRST FLOOR PLAN

546 Buss Road

Cottage Grove, WI 53527

Call Today
(608) 401-4769



SECOND FLOOR PLAN