

# 3157 Drumlin Ridge Drive

Cottage Grove, WI 53527

TIM O'BRIEN  
homes

Call Today  
(608) 401-4769

MOVE-IN READY



PRICED AT

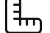
## \$414,900


**Neighborhood:** Shady Grove

3190 Drumlin Rdg Dr, Cottage Grove, WI

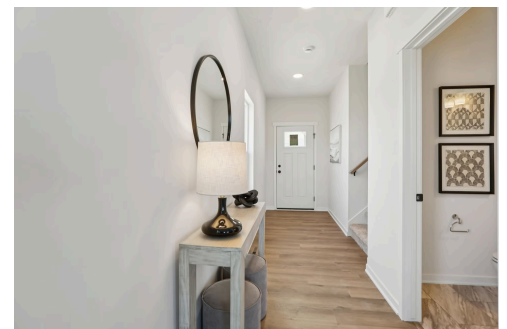
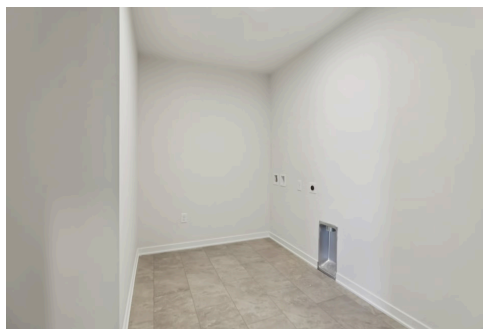
 3 Bedrooms

 2.5 Bathrooms

 1,694 Sq. Ft.

 2 Car Garage

Welcome family and friends into your new energy-efficient green built home with open concept, featuring inviting spaces with an open concept main level. Plenty of room in this home for entertaining, playing games, watching TV or relaxing by your fireplace. This twin home features solid surface counter tops, extra large island and a rear patio. Upstairs features a spacious primary bedroom with box tray ceiling, large walk in closet and ensuite bathroom. The other 2 bedrooms are also nicely sized, both with walk in closets. You will appreciate the conveniently located upper floor laundry room. Tons of potential for a future finished basement. 2 car attached garage.



The information, text, graphics and links provided herein are provided by Tim O'Brien Homes as a convenience to its customers. Tim O'Brien Homes does not guarantee the accuracy or completeness of the information, text, graphics, links and other items contained on this website or any other website. All prices, promotions and specifications are subject to change at any time without notice based on the discretion of Tim O'Brien Homes.

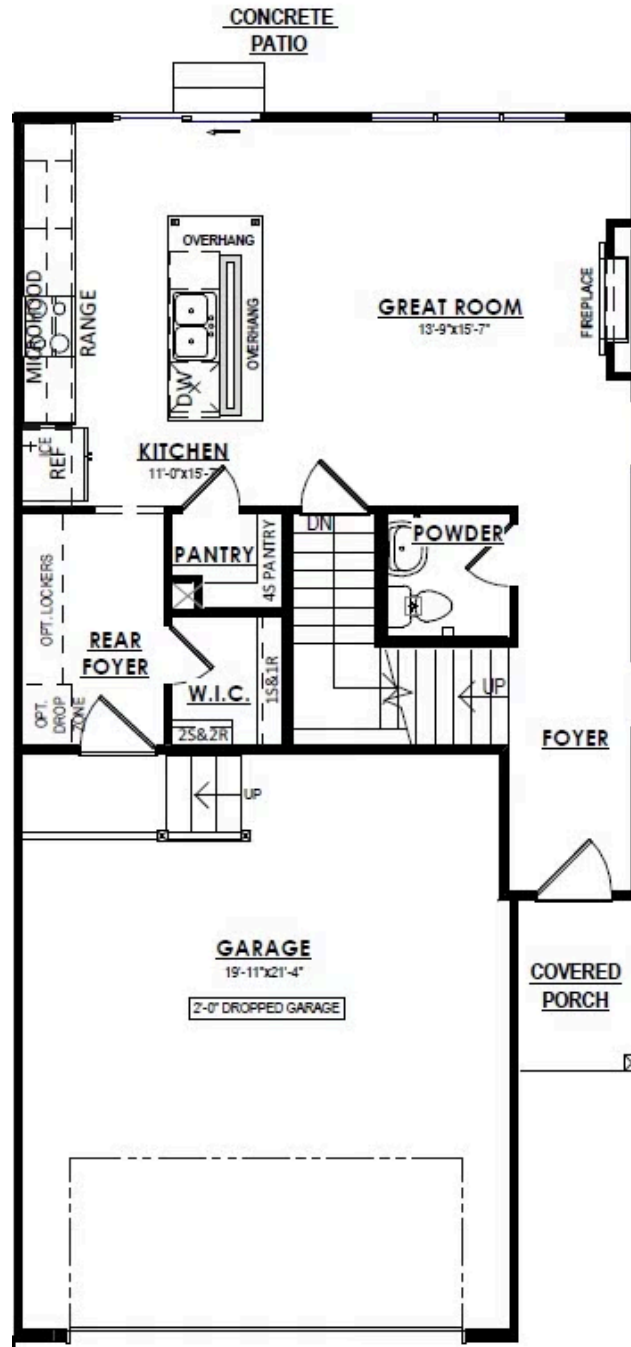


# 3157 Drumlin Ridge Drive

Cottage Grove, WI 53527

TIM O'BRIEN  
homes

Call Today  
(608) 401-4769

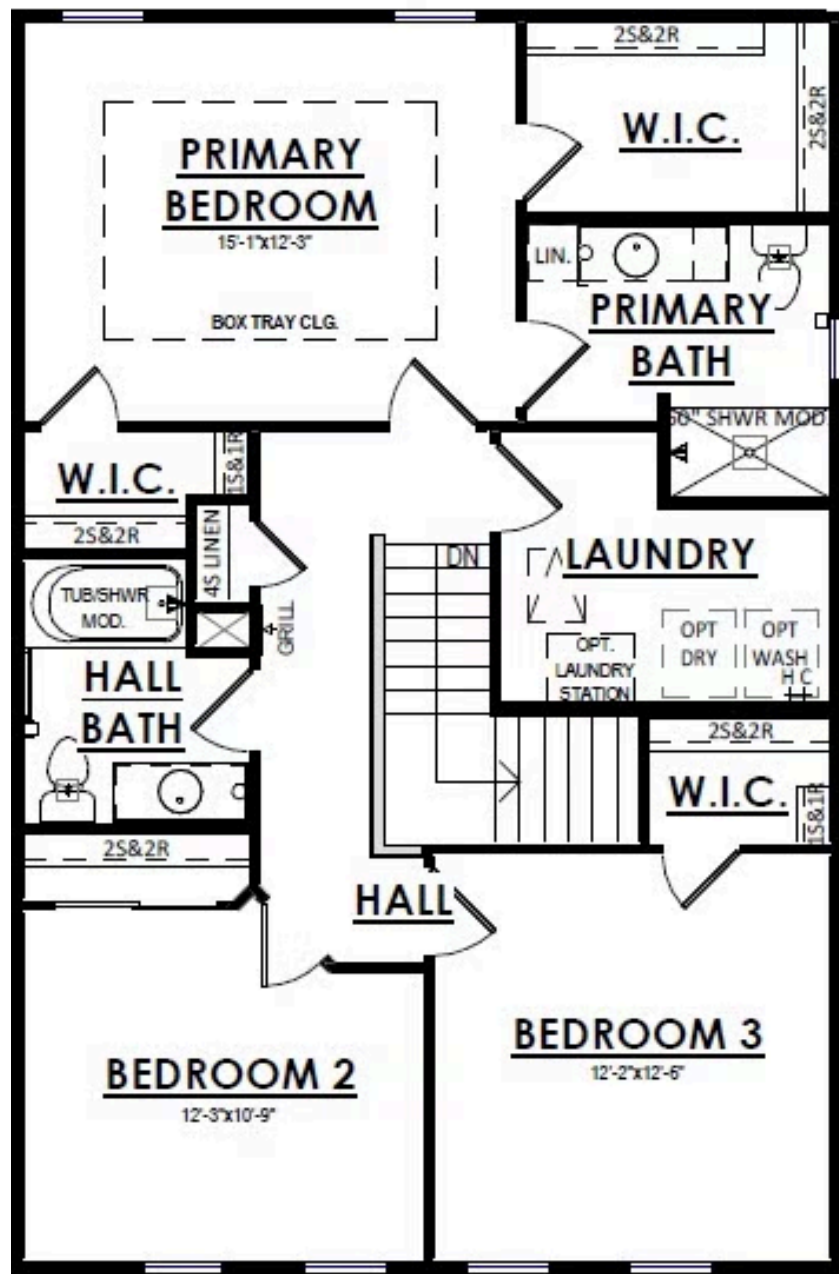


# 3157 Drumlin Ridge Drive

Cottage Grove, WI 53527

TIM O'BRIEN  
homes

Call Today  
(608) 401-4769



The information, text, graphics and links provided herein are provided by Tim O'Brien Homes as a convenience to its customers. Tim O'Brien Homes does not guarantee the accuracy or completeness of the information, text, graphics, links and other items contained on this website or any other website. All prices, promotions and specifications are subject to change at any time without notice based on the discretion of Tim O'Brien Homes.

