

3181 Drumlin Ridge Drive

Cottage Grove, WI 53527

TIM O'BRIEN[®]
homes

Call Today
(608) 401-4769

UNDER CONSTRUCTION



PRICED AT

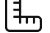
\$424,900


Neighborhood: Shady Grove

3190 Drumlin Rdg Dr, Cottage Grove, WI

 3 Bedrooms

 2.5 Bathrooms

 1,693 Sq. Ft.

 2 Car Garage

The information, text, graphics and links provided herein are provided by Tim O'Brien Homes as a convenience to its customers. Tim O'Brien Homes does not guarantee the accuracy or completeness of the information, text, graphics, links and other items contained on this website or any other website. All prices, promotions and specifications are subject to change at any time without notice based on the discretion of Tim O'Brien Homes.

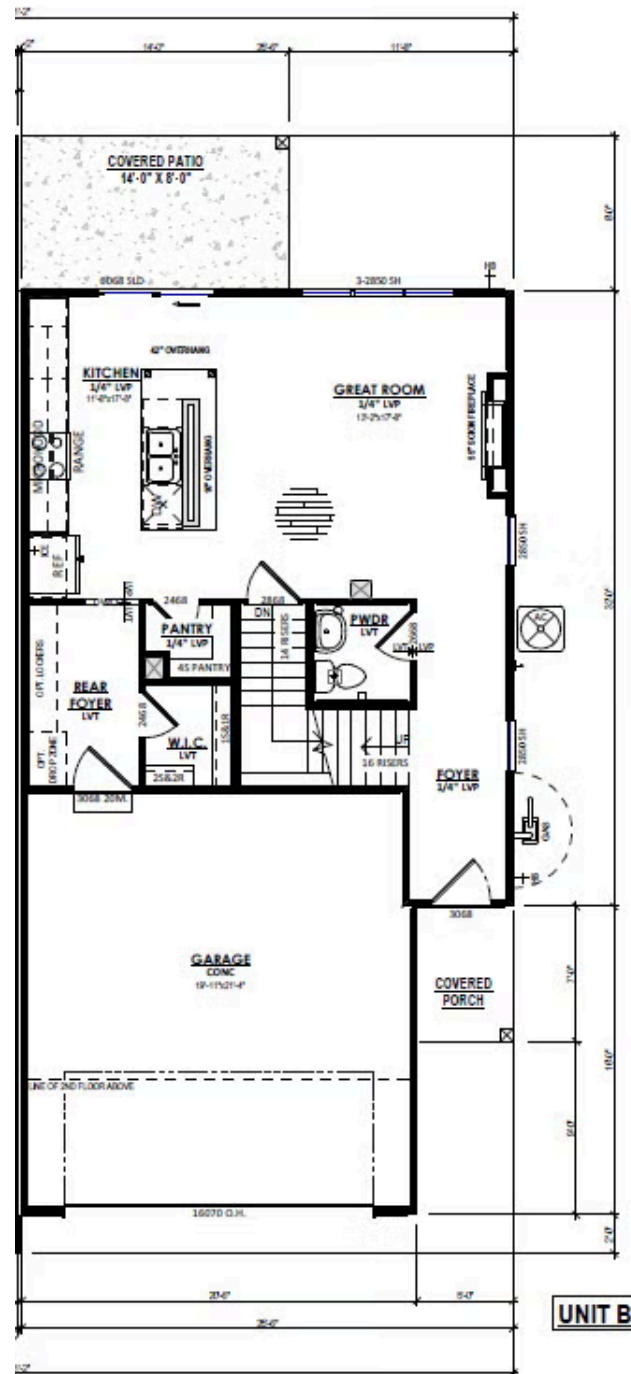


3181 Drumlin Ridge Drive

Cottage Grove, WI 53527

TIM O'BRIEN
homes

Call Today
(608) 401-4769



The information, text, graphics and links provided herein are provided by Tim O'Brien Homes as a convenience to its customers. Tim O'Brien Homes does not guarantee the accuracy or completeness of the information, text, graphics, links and other items contained on this website or any other website. All prices, promotions and specifications are subject to change at any time without notice based on the discretion of Tim O'Brien Homes.

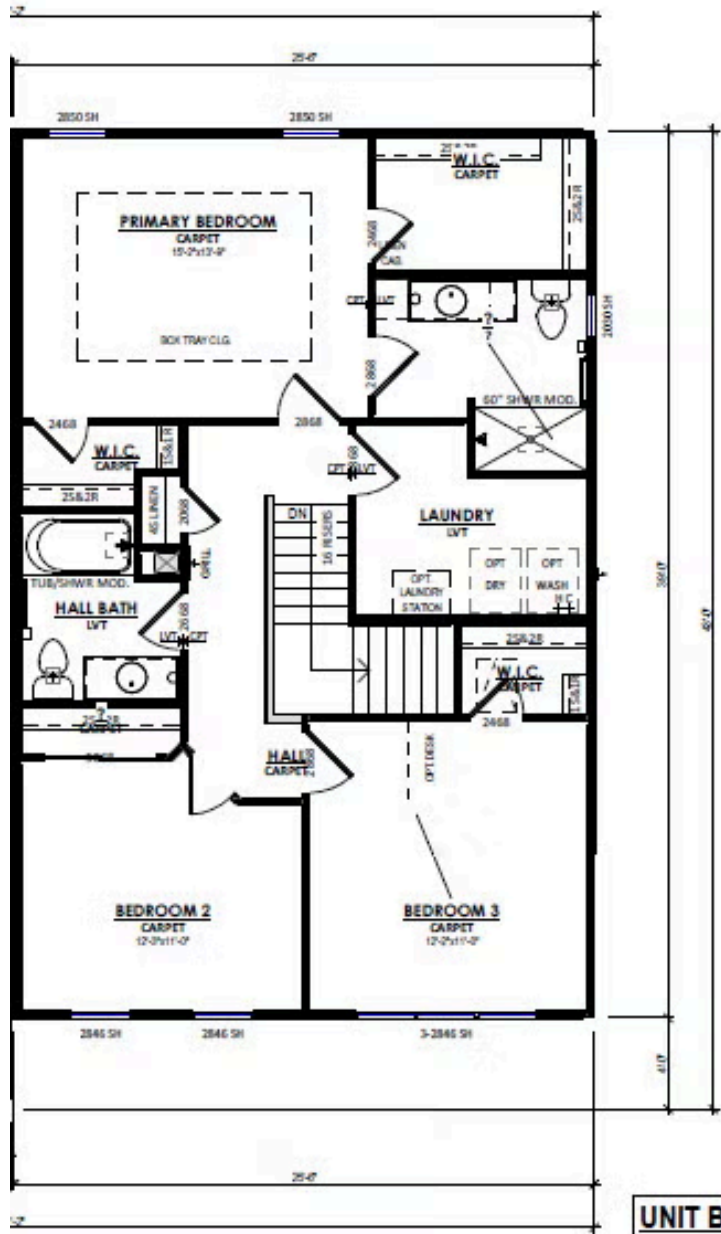


3181 Drumlin Ridge Drive

Cottage Grove, WI 53527



Call Today
(608) 401-4769



The information, text, graphics and links provided herein are provided by Tim O'Brien Homes as a convenience to its customers. Tim O'Brien Homes does not guarantee the accuracy or completeness of the information, text, graphics, links and other items contained on this website or any other website. All prices, promotions and specifications are subject to change at any time without notice based on the discretion of Tim O'Brien Homes.

