

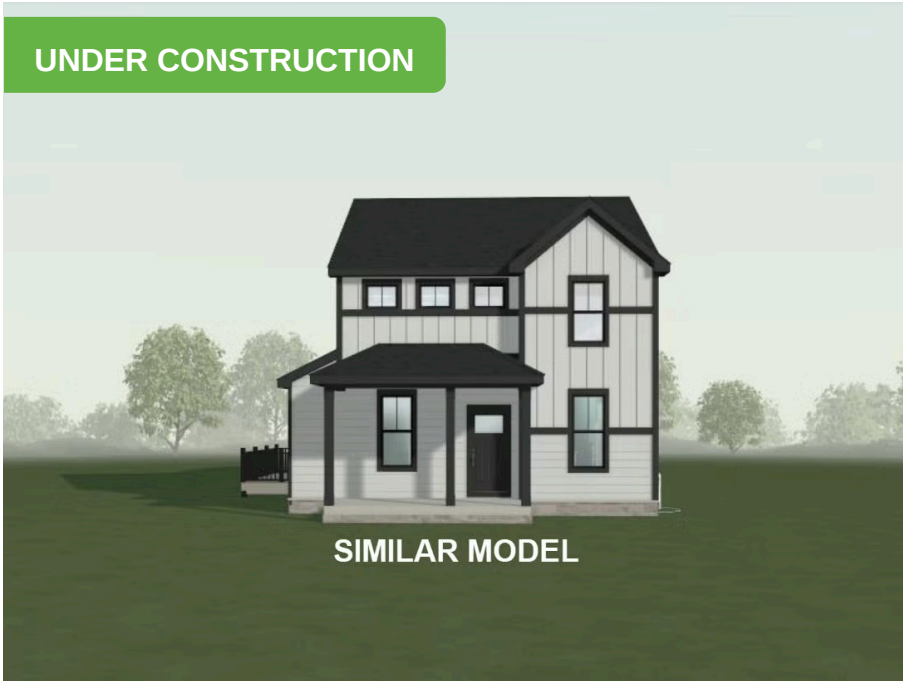
4779 Lacy Road

Fitchburg, WI 53711

TIM O'BRIEN
homes

Call Today
(608) 401-4769

UNDER CONSTRUCTION



PRICED AT

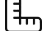
\$624,900

Neighborhood: Terravessa
Fitchburg, WI

Home Plan: The Abbott

 4 Bedrooms

 2.5 Bathrooms

 2,340 Sq. Ft.

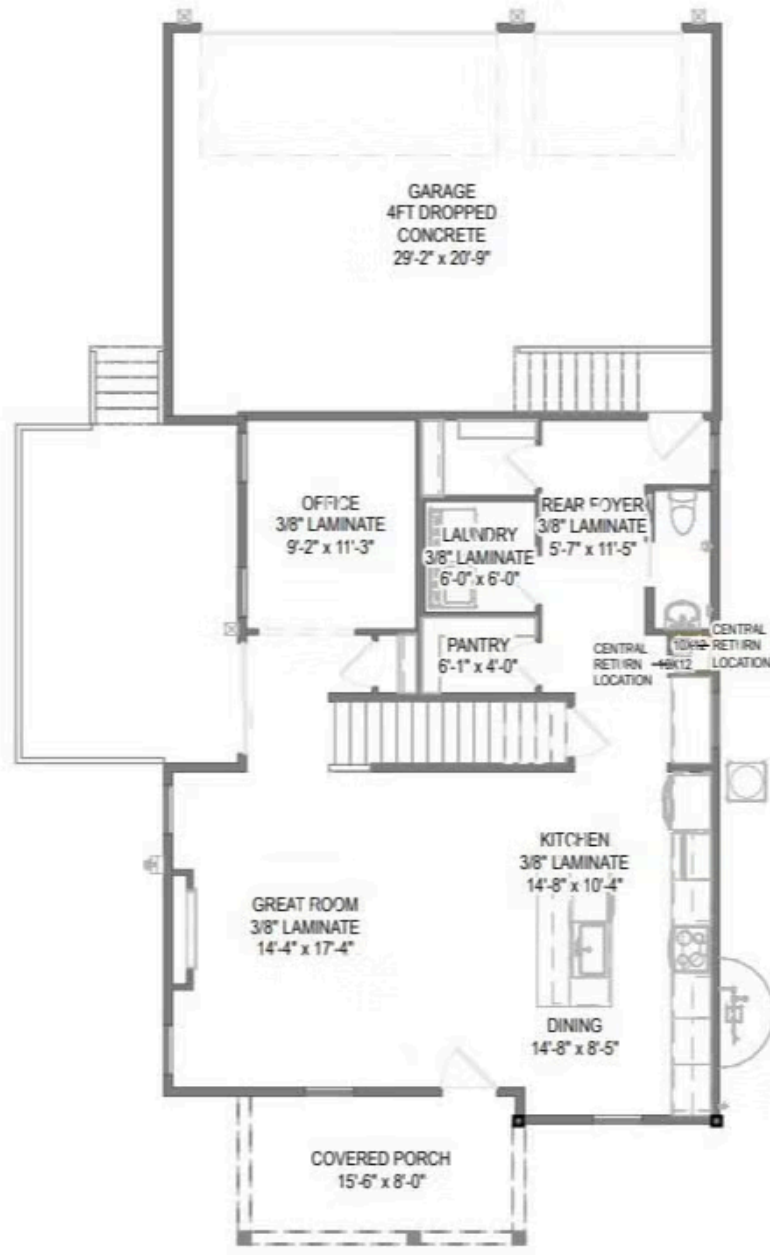
 3 Car Garage

Healthy, Energy-Efficient, NEW Construction! Discover easy living in Terravessa, a vibrant community just 12 minutes from the heart of downtown w/ convenient access to local shops and amenities. Nestled beside a stunning 170-acre nature preserve w/ scenic walking trails, this home offers the perfect blend of comfort and nature. This charming home features an oversized front porch to enjoy morning coffee. Inside, enjoy open-concept living with a bright, spacious kitchen overlooking the dining area and great room, highlighted by a cozy fireplace, ideal for relaxing or entertaining. TWO flex rooms perfect for an office, play room or den. The primary suite features a private en suite bath w/ tiled shower and a walk-in closet. 3 additional bedrooms, a full bath, and second floor laundry lend to a functional layout. A green-treated deck is perfect for outdoor enjoyment. Complete with a 3-car garage, this home offers thoughtful design in an exceptional location. August completion

4779 Lacy Road

Fitchburg, WI 53711

Call Today
(608) 401-4769

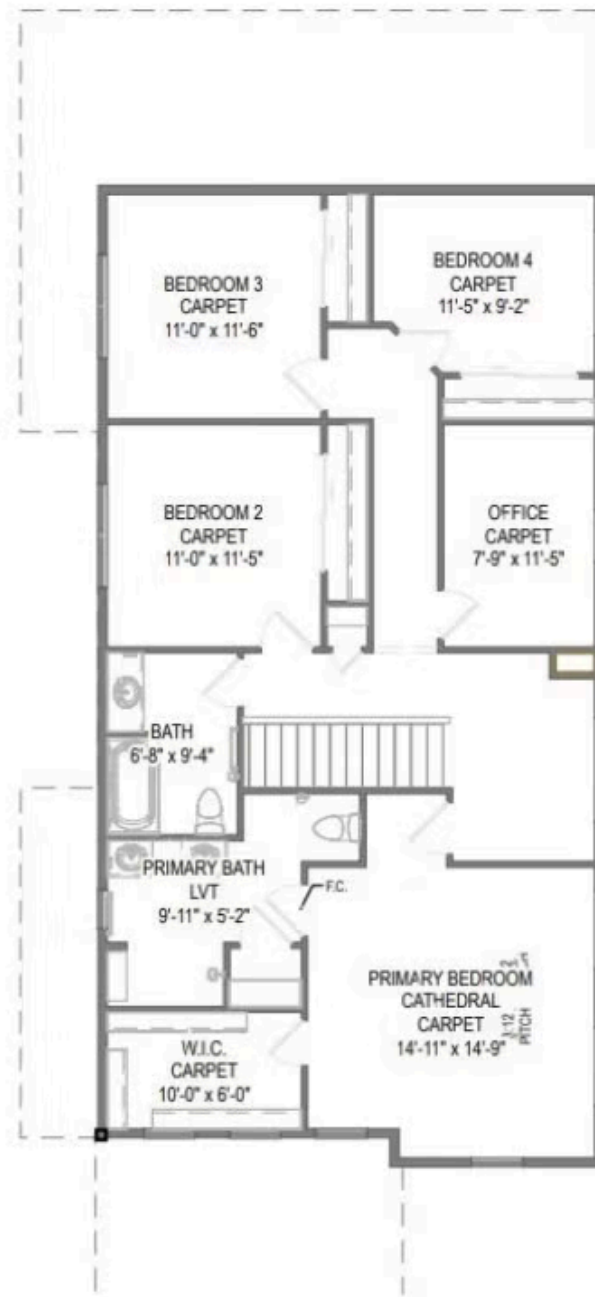


First Floor

4779 Lacy Road

Fitchburg, WI 53711

Call Today
(608) 401-4769



Second Floor