

# 4796 Lacy Rd

Fitchburg, WI 53711

TIM O'BRIEN  
homes

Call Today  
(608) 401-4769

MOVE-IN READY

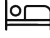





PRICED AT

**\$518,900**

**Neighborhood:** Terravessa  
Fitchburg, WI

**Home Plan:** The Abbott

 3 Bedrooms  
 2.5 Bathrooms  
 2,029 Sq. Ft.  
 2 Car Garage

Energy Efficient New Construction: Tim O'Brien Homes Model Home, The Abbott plan, welcomes you w/ an oversized front porch inviting you into an open living space where the bright sunny Great Room features a cozy fireplace & is open to a large Kitchen with oversized island. The quartz counters & range hood make this kitchen a chef's dream. A Flex Room is located toward the back of the home & provides a quiet area perfect for an office or Formal Dining. The Rear Foyer includes a Laundry Room, walk-in closet & powder room & leads out to the 2 car garage w/ extra storage. In the expansive upper level find 3 bedrooms including the impressive Primary Suite featuring a box tray ceiling, a large walk-in closet & luxurious bath w/ tile shower. Photos of similar model.



The information, text, graphics and links provided herein are provided by Tim O'Brien Homes as a convenience to its customers. Tim O'Brien Homes does not guarantee the accuracy or completeness of the information, text, graphics, links and other items contained on this website or any other website. All prices, promotions and specifications are subject to change at any time without notice based on the discretion of Tim O'Brien Homes.



# 4796 Lacy Rd

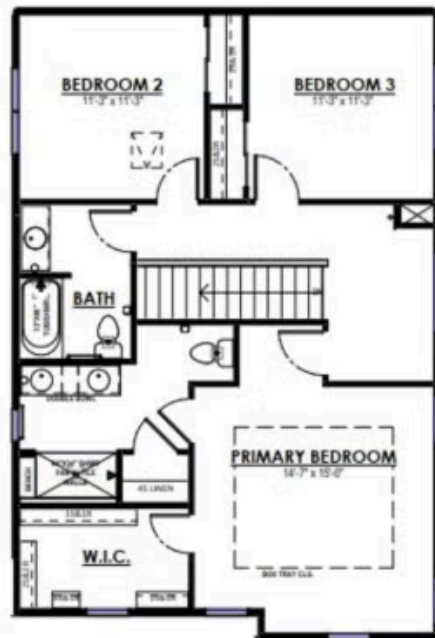
Fitchburg, WI 53711

TIM O'BRIEN  
homes

Call Today  
(608) 401-4769



FRONT ELEVATION - TRADITIONAL



SECOND FLOOR PLAN



FIRST FLOOR PLAN

The information, text, graphics and links provided herein are provided by Tim O'Brien Homes as a convenience to its customers. Tim O'Brien Homes does not guarantee the accuracy or completeness of the information, text, graphics, links and other items contained on this website or any other website. All prices, promotions and specifications are subject to change at any time without notice based on the discretion of Tim O'Brien Homes.

