

4732 Romaine Road

Fitchburg, WI 53711

TIM O'BRIEN
homes

Call Today
(608) 401-4769

UNDER CONSTRUCTION



PRICED AT

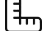
\$609,900


Neighborhood: Terravessa
Fitchburg, WI

Home Plan: The Mulberry

 3 Bedrooms

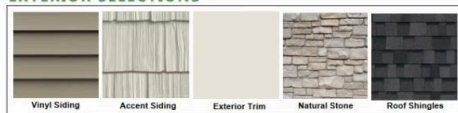
 2.5 Bathrooms

 2,028 Sq. Ft.

 2 Car Garage

Healthy, Energy-Efficient, NEW Construction! Discover easy living in Terravessa, a vibrant community just 12 minutes from the heart of downtown w/ convenient access to local shops and amenities. Nestled beside a stunning 170-acre nature preserve w/ scenic walking trails, this home offers the perfect blend of comfort and nature. This charming home features an oversized front porch to enjoy morning coffee. Inside, enjoy open-concept living with a bright, spacious kitchen w/ huge walk in pantry that is open to the dining area and great room, highlighted by a cozy fireplace, ideal for relaxing or entertaining. A main floor flex room is perfect for an office, play room or den. The primary suite features a private en suite bath w/ tiled shower and a walk-in closet. 2 additional bedrooms, a full bath, and second floor laundry lend to a functional layout. Complete with a 2-car garage, this home offers thoughtful design in an exceptional location. August completion

EXTERIOR SELECTIONS



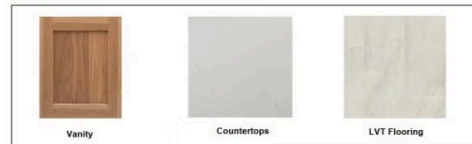
KITCHEN



PRIMARY BATH



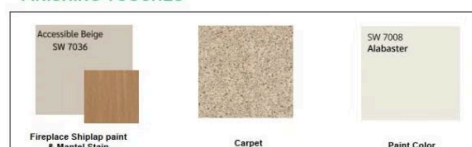
HALL BATH



PLUMBING FIXTURES



FINISHING TOUCHES



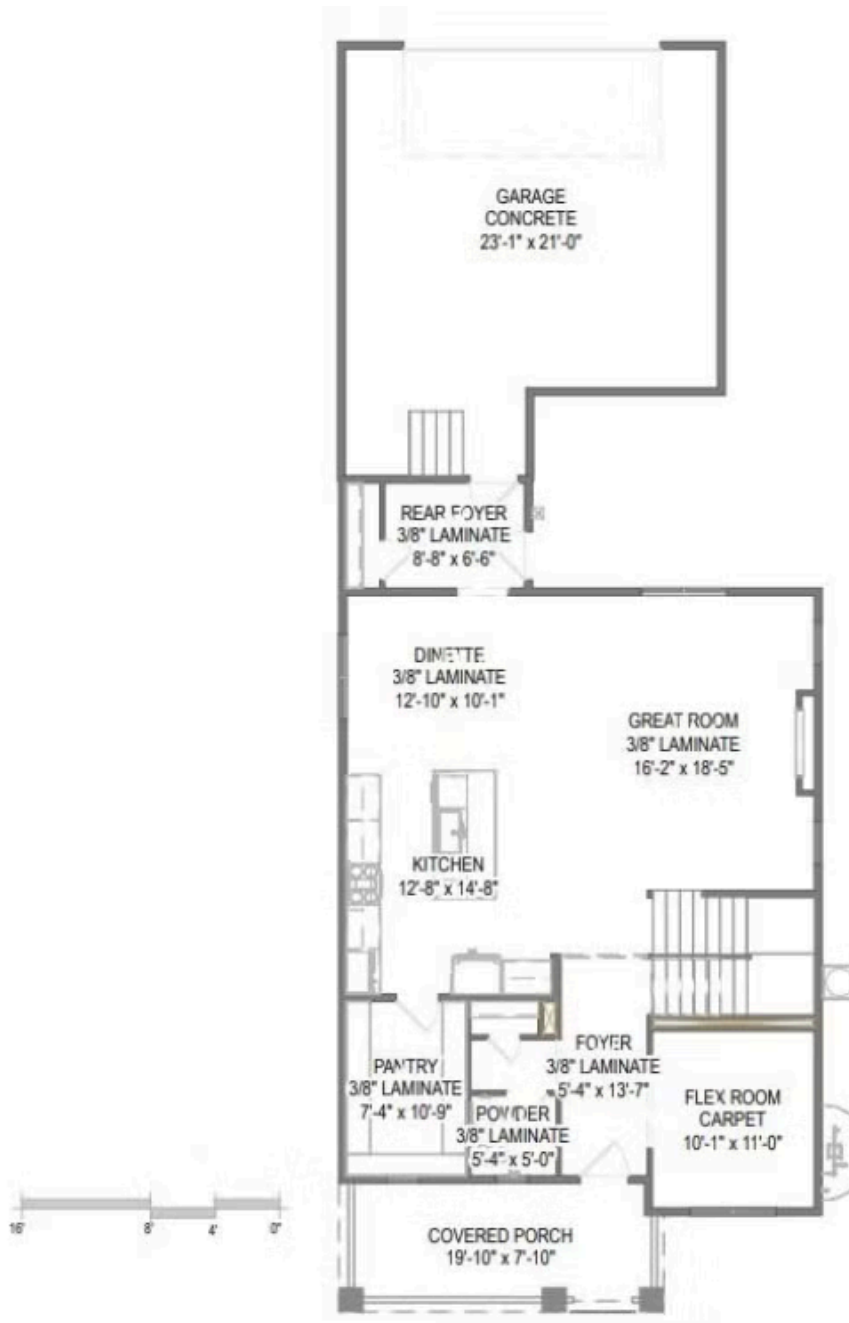
The information, text, graphics and links provided herein are provided by Tim O'Brien Homes as a convenience to its customers. Tim O'Brien Homes does not guarantee the accuracy or completeness of the information, text, graphics, links and other items contained on this website or any other website. All prices, promotions and specifications are subject to change at any time without notice based on the discretion of Tim O'Brien Homes.



4732 Romaine Road

Fitchburg, WI 53711

Call Today
(608) 401-4769



First Floor

4732 Romaine Road

Fitchburg, WI 53711

Call Today
(608) 401-4769



Second Floor