

# 4798 Lacy Road

Fitchburg, WI 53711

TIM O'BRIEN  
homes

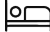
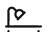
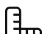

Call Today  
(608) 401-4769



## Call for Price

**Neighborhood:** Terravessa  
Fitchburg, WI

**Home Plan:** The Mulberry

-  3 Bedrooms
-  2.5 Bathrooms
-  2,366 Sq. Ft.
-  2 Car Garage

Welcome to the Mulberry, our newest model home in the vibrant Terravessa community coming soon! Thoughtfully designed for modern living, this two-story home combines functional spaces with warm, welcoming style.

On the first floor, you'll find an open-concept layout anchored by a spacious Great Room and a bright Kitchen with a large island, walk-in pantry, and a convenient Butler's Pantry—perfect for everyday living and entertaining. A flexible front room near the foyer is ideal for a home office, playroom, or guest space.

Upstairs, the home features a private Primary Bedroom with cathedral ceilings, a large walk-in closet, and a luxurious bath. Two additional bedrooms share a full bath, and the second-floor laundry room adds everyday ease.

### Model Home Hours

Thursday - Tuesday 12PM - 4PM

The information, text, graphics and links provided herein are provided by Tim O'Brien Homes as a convenience to its customers. Tim O'Brien Homes does not guarantee the accuracy or completeness of the information, text, graphics, links and other items contained on this website or any other website. All prices, promotions and specifications are subject to change at any time without notice based on the discretion of Tim O'Brien Homes.

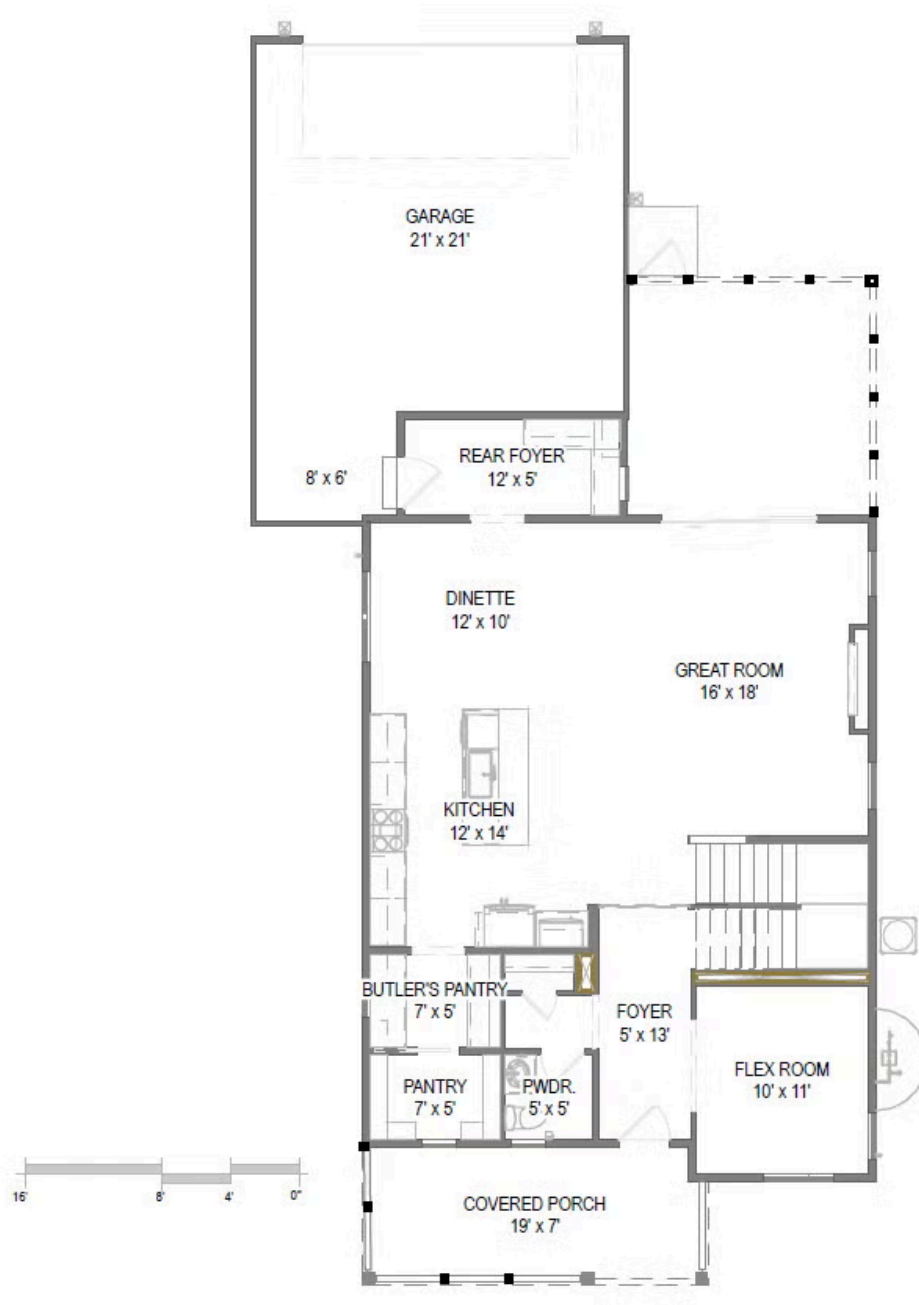


# 4798 Lacy Road

Fitchburg, WI 53711

TIM O'BRIEN  
homes

Call Today  
(608) 401-4769



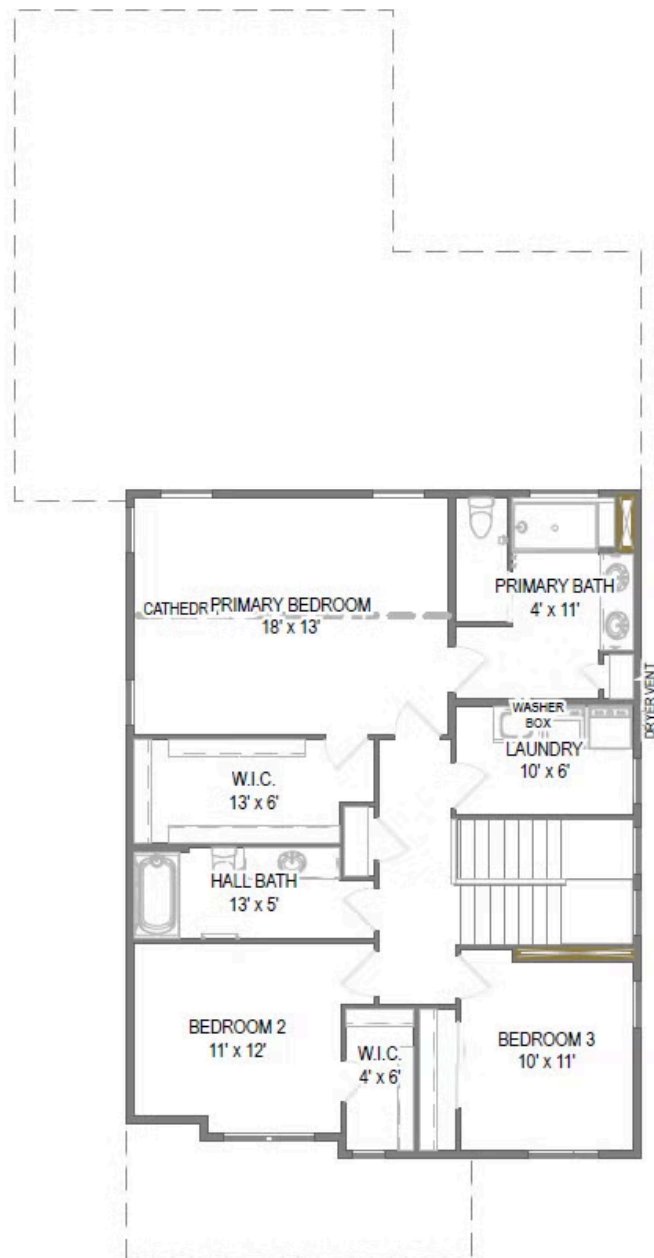
First Floor

# 4798 Lacy Road

Fitchburg, WI 53711

TIM O'BRIEN  
homes

Call Today  
(608) 401-4769



Second Floor