

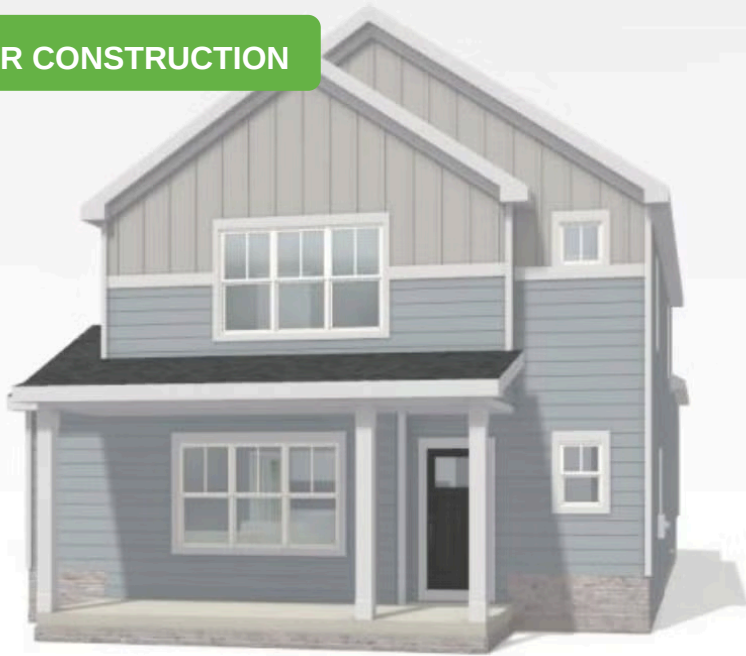
# 4828 Lacy Road

Fitchburg, WI 53711

TIM O'BRIEN  
homes

Call Today  
(608) 401-4769

UNDER CONSTRUCTION



PRICED AT


**\$558,900**


**Neighborhood:** Terravessa  
Fitchburg, WI

**Home Plan:** The O'Keefe

 3 Bedrooms

 2.5 Bathrooms

 1,989 Sq. Ft.

 2 Car Garage

Energy Efficient New Construction: Tim O'Brien Homes O'Keefe plan welcomes you w/ an oversized front porch inviting you into an open living space where the bright sunny Great Room features a cozy fireplace & is open to a large Kitchen with huge island. The quartz counters & walk-in pantry make this kitchen a chef's dream. A Flex Room is located off the main living & provides a quiet area perfect for an office or formal dining. The rear 2 car garage offers extra storage space. In the expansive upper level find 3 bedrooms including the impressive Primary Suite w/ a large walk-in closet & luxurious bath w/ tile shower. Large laundry room is conveniently located on the 2nd floor. Under construction, Move-in ready in November.

# 4828 Lacy Road

Fitchburg, WI 53711

TIM O'BRIEN  
homes

Call Today  
(608) 401-4769



First Floor

# 4828 Lacy Road

Fitchburg, WI 53711

TIM O'BRIEN  
homes

Call Today  
(608) 401-4769



Second Floor