



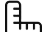
Call for Price

Home Style: First Floor Primary

3 Elevations Available

 2 Bedroom

 2.5 Bathrooms

 1,648 Sq. Ft.

 2 Car Garage

 46 HERS Score

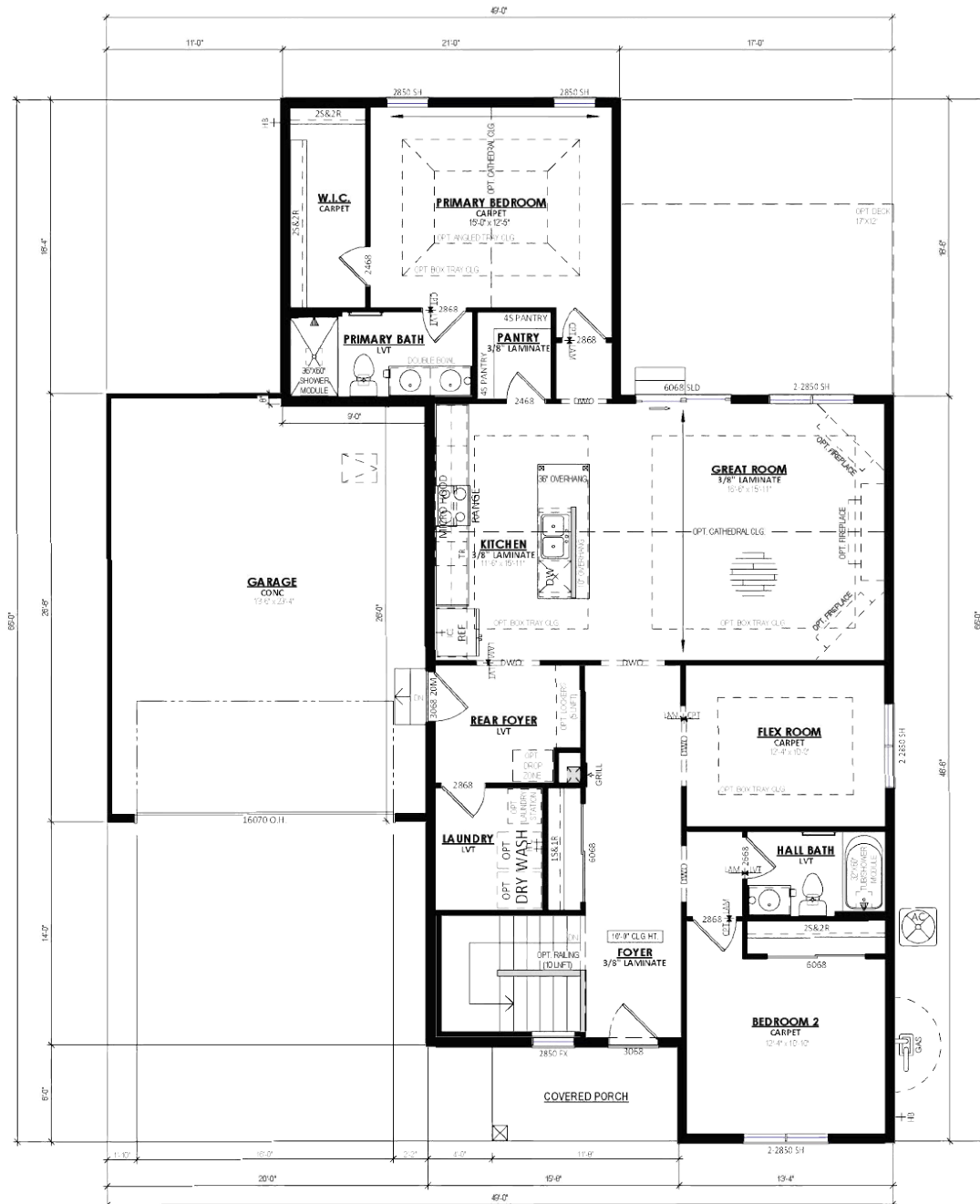
The Renoir is a floor plan designed with a focus on simplicity, functionality, and modern living. The entrance through the front foyer immediately introduces the practical layout of this home. A hallway leads you past essential amenities, including a secondary bedroom, convenient for guests, and a half bathroom. Adjacent to this area is a flex room, offering the flexibility to serve as an office, hobby room, or additional living space, tailored to your needs. The inclusion of a laundry room nearby adds to the home's efficiency, positioned for easy access. The rear foyer creates a seamless connection from the garage into the home, emphasizing the thoughtful flow of the floor plan. The heart of the home is the spacious great room, merging effortlessly with the kitchen area. This open-concept space is designed for comfort and usability, featuring ample natural light and a view of the backyard through picturesque dinette windows. Tucked away for privacy, the primary bedroom is strategically placed to offer a quiet retreat. It includes a large bedroom and bathroom for a relaxed, functional space, and a spacious closet for organization.

The Renoir

Terravessa

TIM O'BRIEN
homes

Call Today
(608) 401-4769



The information, text, graphics and links provided herein are provided by Tim O'Brien Homes as a convenience to its customers. Tim O'Brien Homes does not guarantee the accuracy or completeness of the information, text, graphics, links and other items contained on this website or any other website. All prices, promotions and specifications are subject to change at any time without notice based on the discretion of Tim O'Brien Homes.

