

6686 Redpoll Rd

Middleton, WI 53562

TIM O'BRIEN
homes

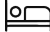

Call Today
(608) 401-4769



Call for Price

Neighborhood: Redtail Ridge
Belle Fontaine Rd, Middleton, WI

Home Plan: The Abbott

-  4 Bedrooms
-  2.5 Bathrooms
-  2,341 Sq. Ft.
-  3 Car Garage

Check out our new Model Home in Redtail Ridge showcases a flexible layout designed to fit a variety of lifestyles. The main floor features an open-concept Great Room anchored by a cozy fireplace and spacious Kitchen with a central island and walk-in pantry. A front Flex Room adds versatility—perfect for a home office, playroom, or guest suite—while a Rear Foyer and large Laundry Room help keep everyday life organized. Upstairs, the home includes four spacious bedrooms, including a serene Primary Suite with cathedral ceiling, large walk-in closet, and a private bath retreat.



The information, text, graphics and links provided herein are provided by Tim O'Brien Homes as a convenience to its customers. Tim O'Brien Homes does not guarantee the accuracy or completeness of the information, text, graphics, links and other items contained on this website or any other website. All prices, promotions and specifications are subject to change at any time without notice based on the discretion of Tim O'Brien Homes.

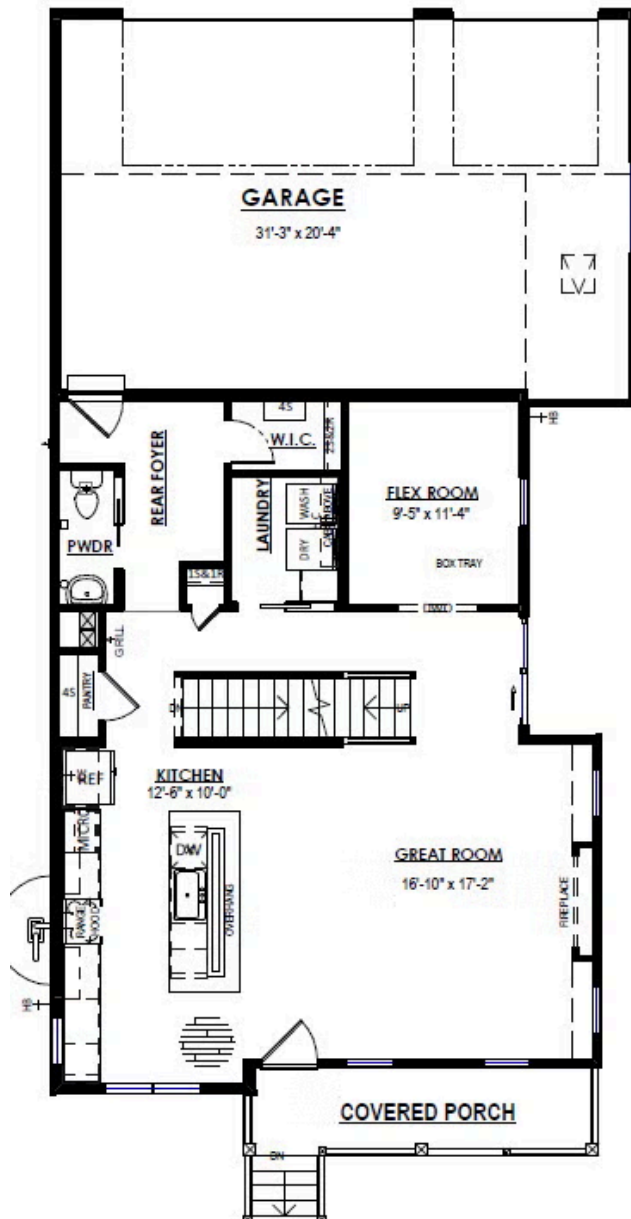


6686 Redpoll Rd

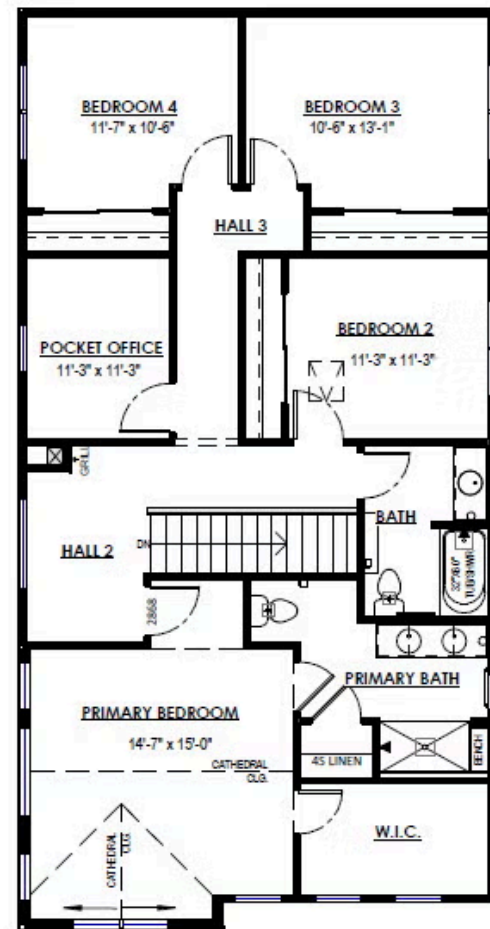
Middleton, WI 53562

TIM O'BRIEN
homes

Call Today
(608) 401-4769



FIRST FLOOR PLAN



STANDARD SECOND FLOOR