

The Alpine

Windsor Gardens

TIM O'BRIEN
homes

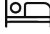
Call Today
(608) 401-4769



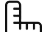
Call for Price

Home Style: First Floor Primary

4 Elevations Available

 4 Bedroom

 2.5 Bathrooms

 2,281 Sq. Ft.

 2 - 3 Car Garage

 46 HERS Score

The Alpine brings together open-concept living, flexible spaces, and a convenient first-floor primary bedroom, all designed to fit a variety of lifestyles.

On the main floor, you're welcomed by a covered front porch and a bright foyer that opens into the heart of the home. The great room, dinette, and kitchen flow together, offering plenty of room for gathering and everyday living. A large kitchen island, walk-in pantry, and ample counter space make meal prep easy, while the dinette's open layout is perfect for hosting or casual family meals.

Tucked privately on the first floor, the **primary bedroom** includes a spacious walk-in closet and a well-appointed primary bath with double sinks and a walk-in shower. A **flex room** near the front of the home can serve as a home office, playroom, or quiet retreat. A convenient **first-floor laundry room** and **powder room** sit right off the garage entry, helping keep daily routines organized.

Upstairs, three additional bedrooms offer plenty of space for family or guests. A shared hall bath sits centrally off the landing, and an open-to-below feature brings in natural light and keeps the second floor feeling airy.



The information, text, graphics and links provided herein are provided by Tim O'Brien Homes as a convenience to its customers. Tim O'Brien Homes does not guarantee the accuracy or completeness of the information, text, graphics, links and other items contained on this website or any other website. All prices, promotions and specifications are subject to change at any time without notice based on the discretion of Tim O'Brien Homes.

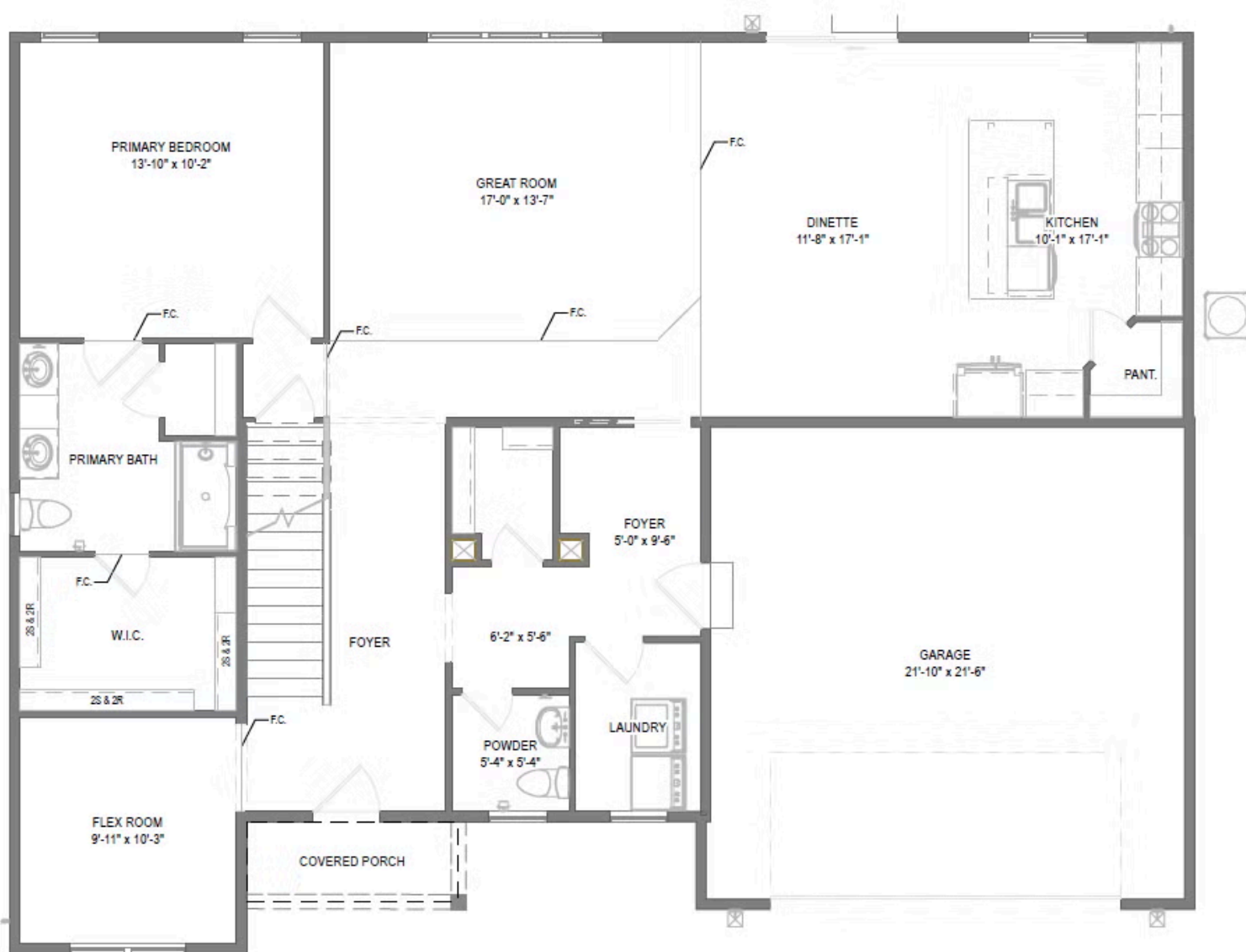


The Alpine

Windsor Gardens

TIM O'BRIEN
homes

Call Today
(608) 401-4769



First Floor

The information, text, graphics and links provided herein are provided by Tim O'Brien Homes as a convenience to its customers. Tim O'Brien Homes does not guarantee the accuracy or completeness of the information, text, graphics, links and other items contained on this website or any other website. All prices, promotions and specifications are subject to change at any time without notice based on the discretion of Tim O'Brien Homes.



The Alpine

Windsor Gardens

TIM O'BRIEN
homes

Call Today
(608) 401-4769



The information, text, graphics and links provided herein are provided by Tim O'Brien Homes as a convenience to its customers. Tim O'Brien Homes does not guarantee the accuracy or completeness of the information, text, graphics, links and other items contained on this website or any other website. All prices, promotions and specifications are subject to change at any time without notice based on the discretion of Tim O'Brien Homes.

