

The Birchwood

Cape Crossing

TIM O'BRIEN
homes

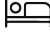
Call Today
(262) 239-7342



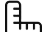
Call for Price

Home Style: First Floor Primary

4 Elevations Available

 4 - 5 Bedroom

 2.5 Bathrooms

 2,680 - 2,685 Sq. Ft.

 2 - 3 Car Garage

 46 HERS Score

The Birchwood captivates with a grand two-story Foyer. As you move further, under the architectural elegance of the walkway above, the Foyer gives way to a generous living space, Kitchen, and dining area. The Powder Room and Flex Room find their place at the front of the home, while the spacious first-floor Primary Suite lies towards the rear, boasting a sizable walk-in closet and an opulent en suite bathroom. A well-equipped Laundry Room featuring a walk-in closet and extra cabinet space adds utility to the first floor. The second floor hosts a tastefully designed walkway leading to a loft, three additional bedrooms, and a full bathroom, creating a comfortable and practical living space.



The information, text, graphics and links provided herein are provided by Tim O'Brien Homes as a convenience to its customers. Tim O'Brien Homes does not guarantee the accuracy or completeness of the information, text, graphics, links and other items contained on this website or any other website. All prices, promotions and specifications are subject to change at any time without notice based on the discretion of Tim O'Brien Homes.

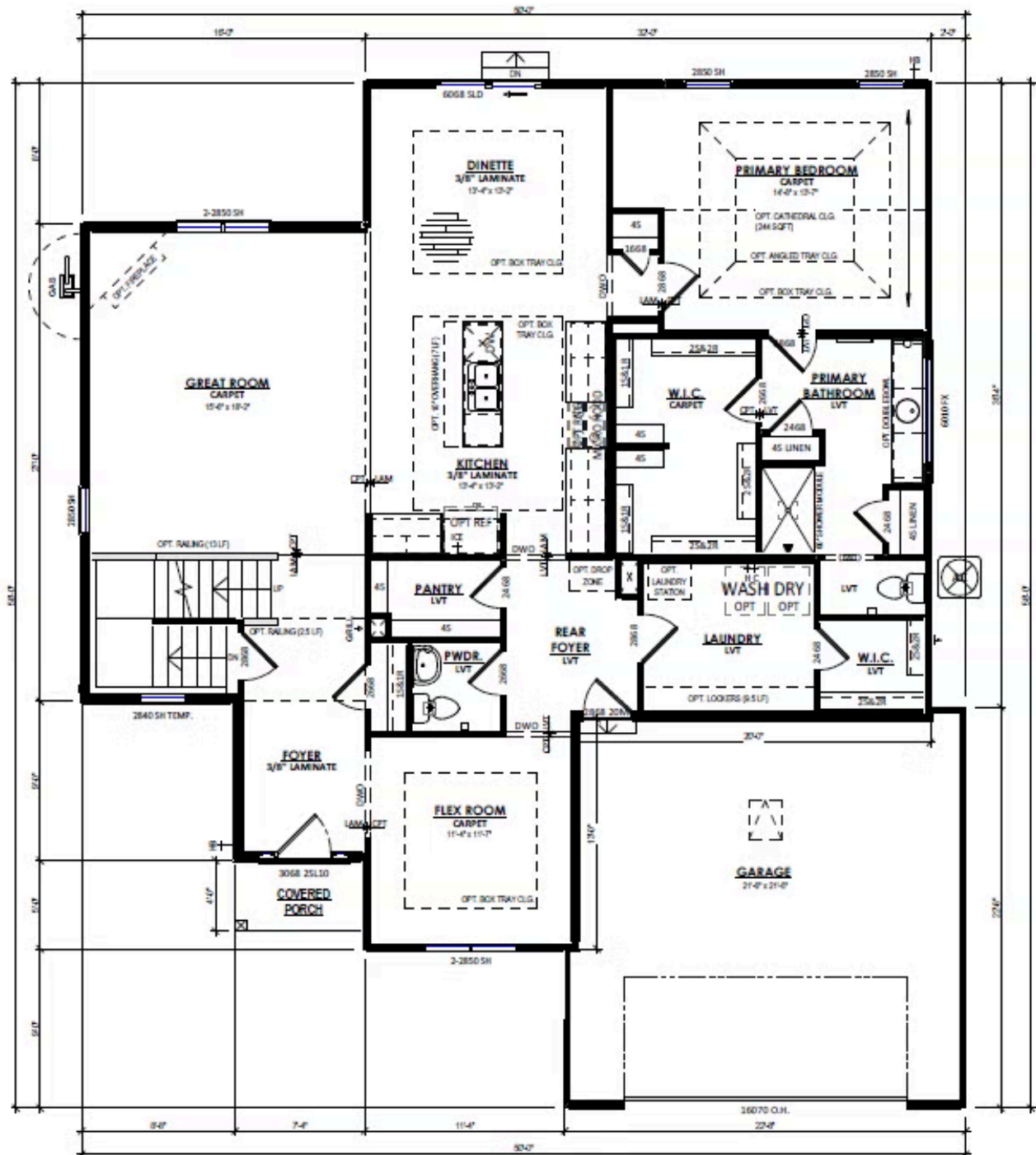


Cape Crossing



TIM O'BRIEN[®]
homes

Call Today
(262) 239-7342



Call Today
(262) 239-7342

