

The Sycamore

Country View

TIM O'BRIEN
homes

Call Today
(262) 239-7342

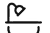


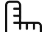
Call for Price

Home Style: Two-Story

4 Elevations Available

 4 - 5 Bedroom

 2.5 - 4 Bathrooms

 3,189 Sq. Ft.

 2 - 3 Car Garage

 46 HERS Score

The main floor centers around a bright great room that flows seamlessly into the kitchen and dinette, creating a natural gathering space for both daily routines and entertaining. The kitchen offers a central workspace with easy access to the pantry and rear foyer, keeping storage and organization within reach. Just off the front foyer, a flex room provides a versatile space that can adapt to your needs, whether that's a home office, playroom, or quiet sitting area.

Upstairs, the layout is thoughtfully arranged to balance privacy and connection. The primary suite is tucked away on its own side, featuring a spacious bedroom, a well-appointed bath, and a walk-in closet. Three additional bedrooms are located on the opposite end, along with a shared bath and a centrally located laundry room for added convenience. A second-floor family room offers an extra living space that's perfect for relaxing, studying, or gathering.



The information, text, graphics and links provided herein are provided by Tim O'Brien Homes as a convenience to its customers. Tim O'Brien Homes does not guarantee the accuracy or completeness of the information, text, graphics, links and other items contained on this website or any other website. All prices, promotions and specifications are subject to change at any time without notice based on the discretion of Tim O'Brien Homes.



The Sycamore

Country View

TIM O'BRIEN
homes

Call Today
(262) 239-7342



First Floor

The information, text, graphics and links provided herein are provided by Tim O'Brien Homes as a convenience to its customers. Tim O'Brien Homes does not guarantee the accuracy or completeness of the information, text, graphics, links and other items contained on this website or any other website. All prices, promotions and specifications are subject to change at any time without notice based on the discretion of Tim O'Brien Homes.

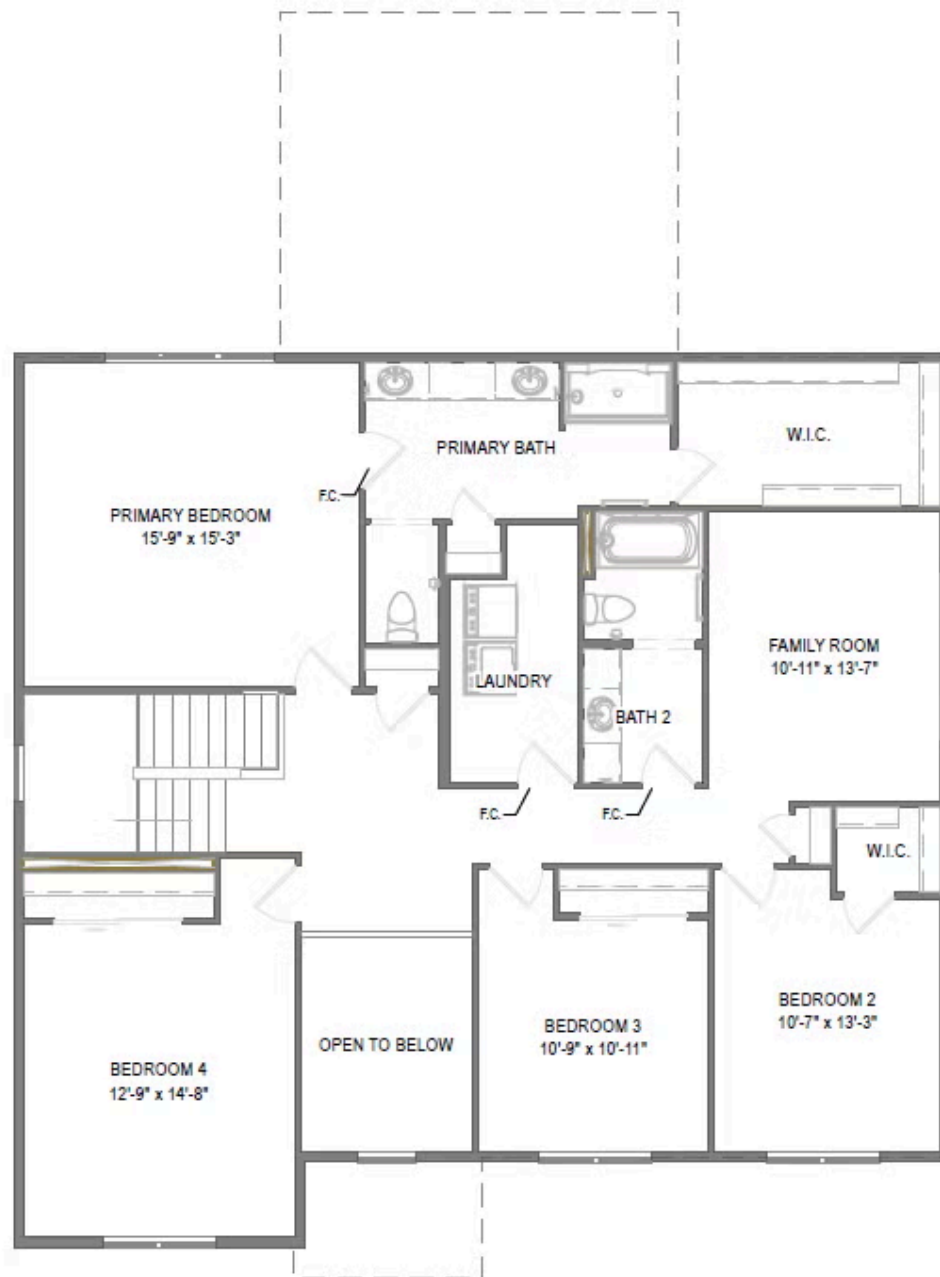


The Sycamore

Country View

TIM O'BRIEN
homes

Call Today
(262) 239-7342



Second Floor

The information, text, graphics and links provided herein are provided by Tim O'Brien Homes as a convenience to its customers. Tim O'Brien Homes does not guarantee the accuracy or completeness of the information, text, graphics, links and other items contained on this website or any other website. All prices, promotions and specifications are subject to change at any time without notice based on the discretion of Tim O'Brien Homes.

