

# The Wicklow

Lake Five Farms

TIM O'BRIEN  
homes

Call Today  
(262) 239-7342



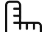
## Call for Price


**Home Style:** Two-Story

4 Elevations Available

 4 - 5 Bedroom

 3.5 Bathrooms

 3,173 Sq. Ft.

 2 - 3 Car Garage

 46 HERS Score

The Wicklow is an impressive two-story plan with many desirable features. The Flex Room is located immediately off the Front Foyer. The plan then opens to a vast living space, highlighted by a grand two-story great room with a fireplace acting as the focal point in the center of the room. The Dinette is situated between the Great Room and large gourmet Kitchen, which has a Butler's Pantry and walk-in pantry. The upper level has a loft and walkway at the top of the stairs with views down to the Great Room and Front Foyer. One of the three Secondary Bedrooms is secluded on one side of the home with an attached full bathroom. The additional two secondary bedrooms share a hall bathroom and each have walk-in closets. The Owner's Suite at the back of the upper level features a large walk-in closet and Owner's bath with a private water closet and double bowl vanity.



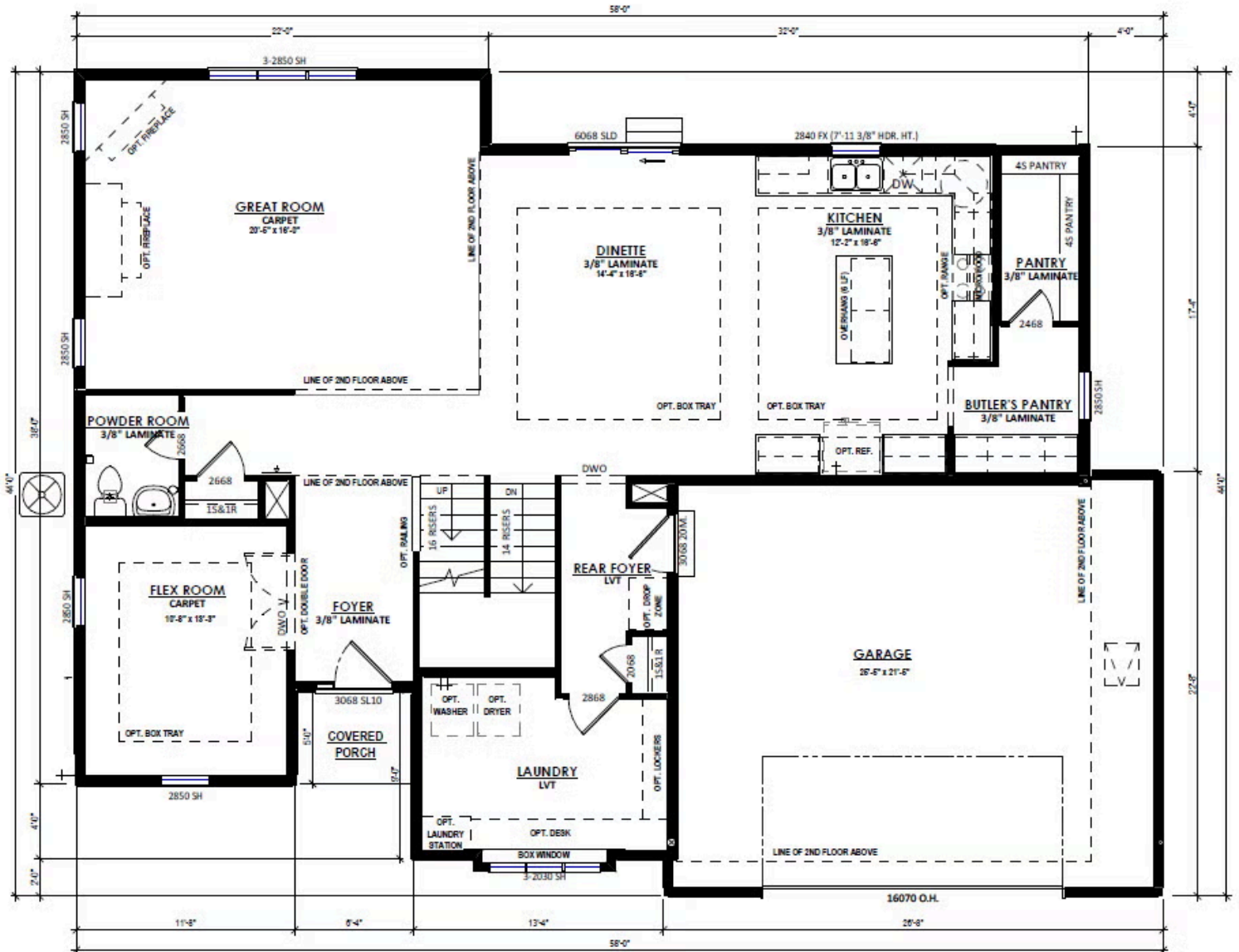
The information, text, graphics and links provided herein are provided by Tim O'Brien Homes as a convenience to its customers. Tim O'Brien Homes does not guarantee the accuracy or completeness of the information, text, graphics, links and other items contained on this website or any other website. All prices, promotions and specifications are subject to change at any time without notice based on the discretion of Tim O'Brien Homes.



# The Wicklow

Lake Five Farms

Call Today  
(262) 239-7342



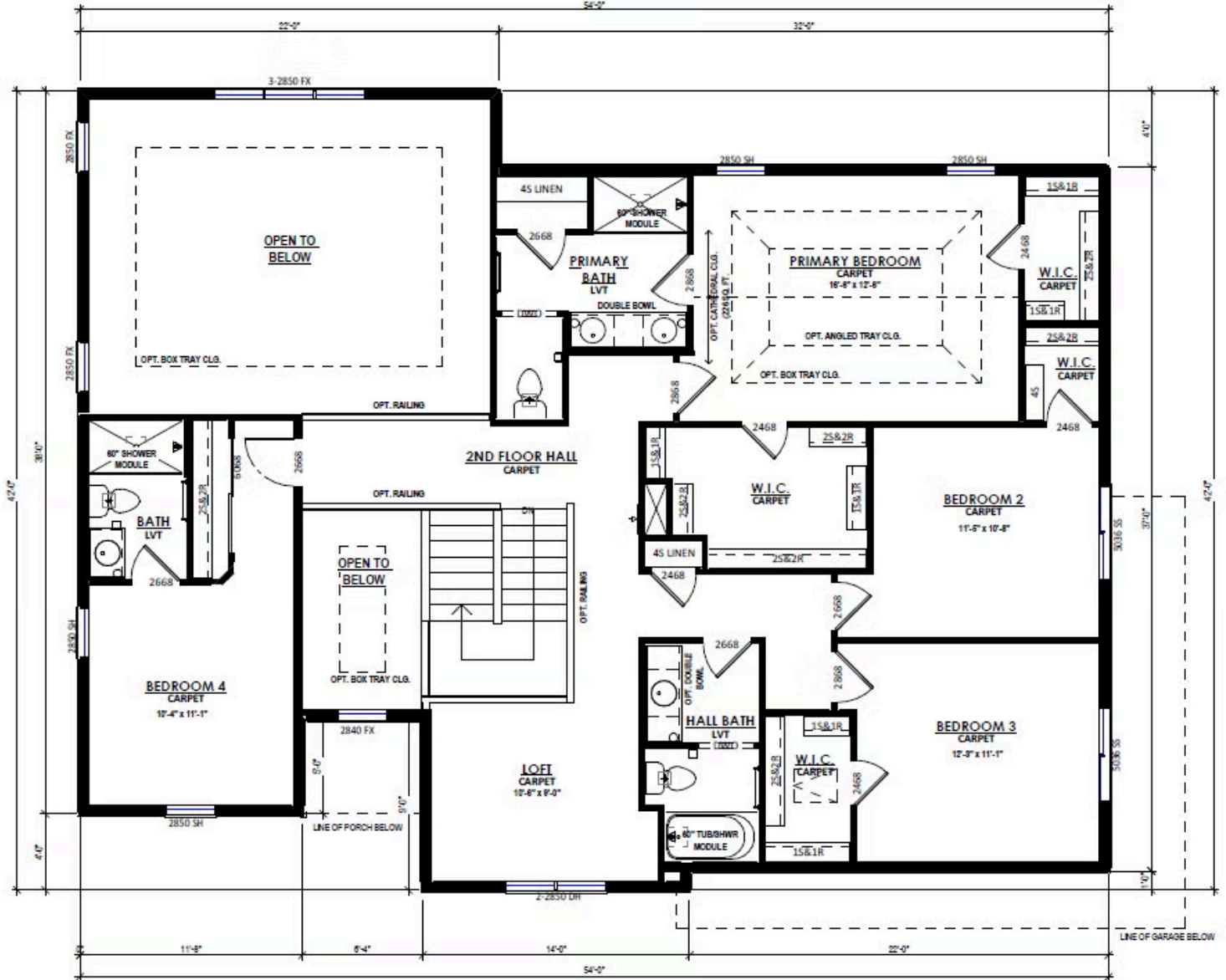
FIRST FLOOR PLAN



# The Wicklow

Lake Five Farms

Call Today  
(262) 239-7342



**SECOND FLOOR PLAN**