

The Clare

Homestead Ridge

TIM O'BRIEN
homes

Call Today
(262) 239-7342



Call for Price


Home Style: Ranch

4 Elevations Available

 3 Bedroom

 2.5 Bathrooms

 2,630 Sq. Ft.

 2 - 3 Car Garage

 46 HERS Score

The Clare offers a thoughtfully designed ranch layout that blends open gathering spaces with private retreats throughout the home. At the center of the plan, the spacious kitchen features a large island, walk-in pantry, and seamless connection to the dinette and great room, creating an ideal space for everyday living and entertaining alike.

The privately located primary bedroom includes a generous walk-in closet and a well-appointed bath with dual vanities and a tiled shower. Two secondary bedrooms and a hall bath are positioned on the opposite side of the home, offering comfort and flexibility for family members or guests.

A front flex room near the covered porch provides additional versatility for a home office, study, or hobby space, while the rear foyer and dedicated laundry room help keep daily routines organized.



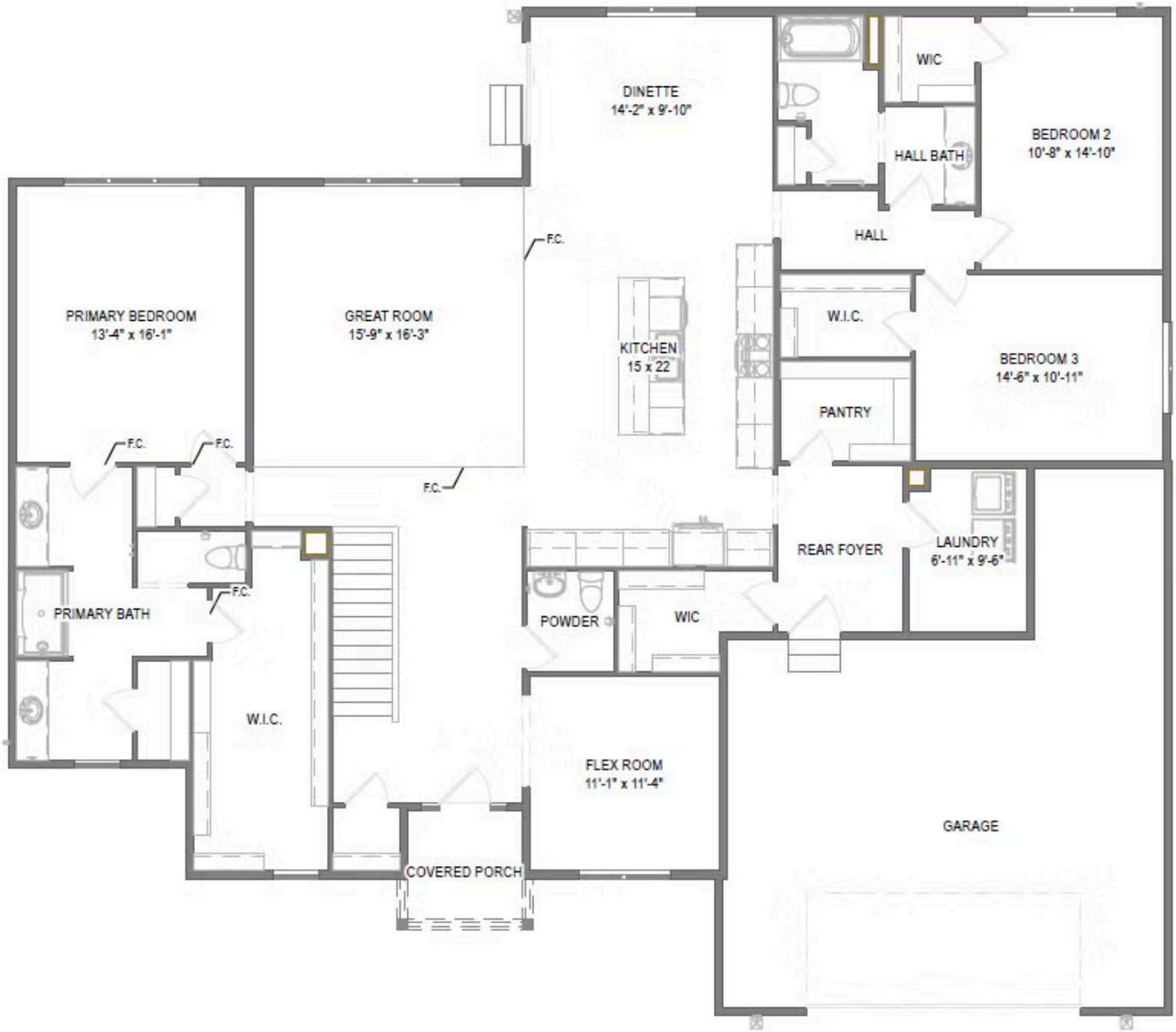
The information, text, graphics and links provided herein are provided by Tim O'Brien Homes as a convenience to its customers. Tim O'Brien Homes does not guarantee the accuracy or completeness of the information, text, graphics, links and other items contained on this website or any other website. All prices, promotions and specifications are subject to change at any time without notice based on the discretion of Tim O'Brien Homes.



The Clare

Homestead Ridge

Call Today
(262) 239-7342



First Floor

The Clare

Homestead Ridge

Call Today
(262) 239-7342



Basement