

W259N5967 Amberwood Ct

Lisbon, WI 53089

TIM O'BRIEN
homes

Call Today
(262) 600-3769

UNDER CONSTRUCTION



PRICED AT

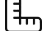
\$829,900

Neighborhood: October Fields
Walnut Road, Lisbon, WI

Home Plan: The Birchwood

 4 Bedrooms

 2.5 Bathrooms

 2,753 Sq. Ft.

 3 Car Garage

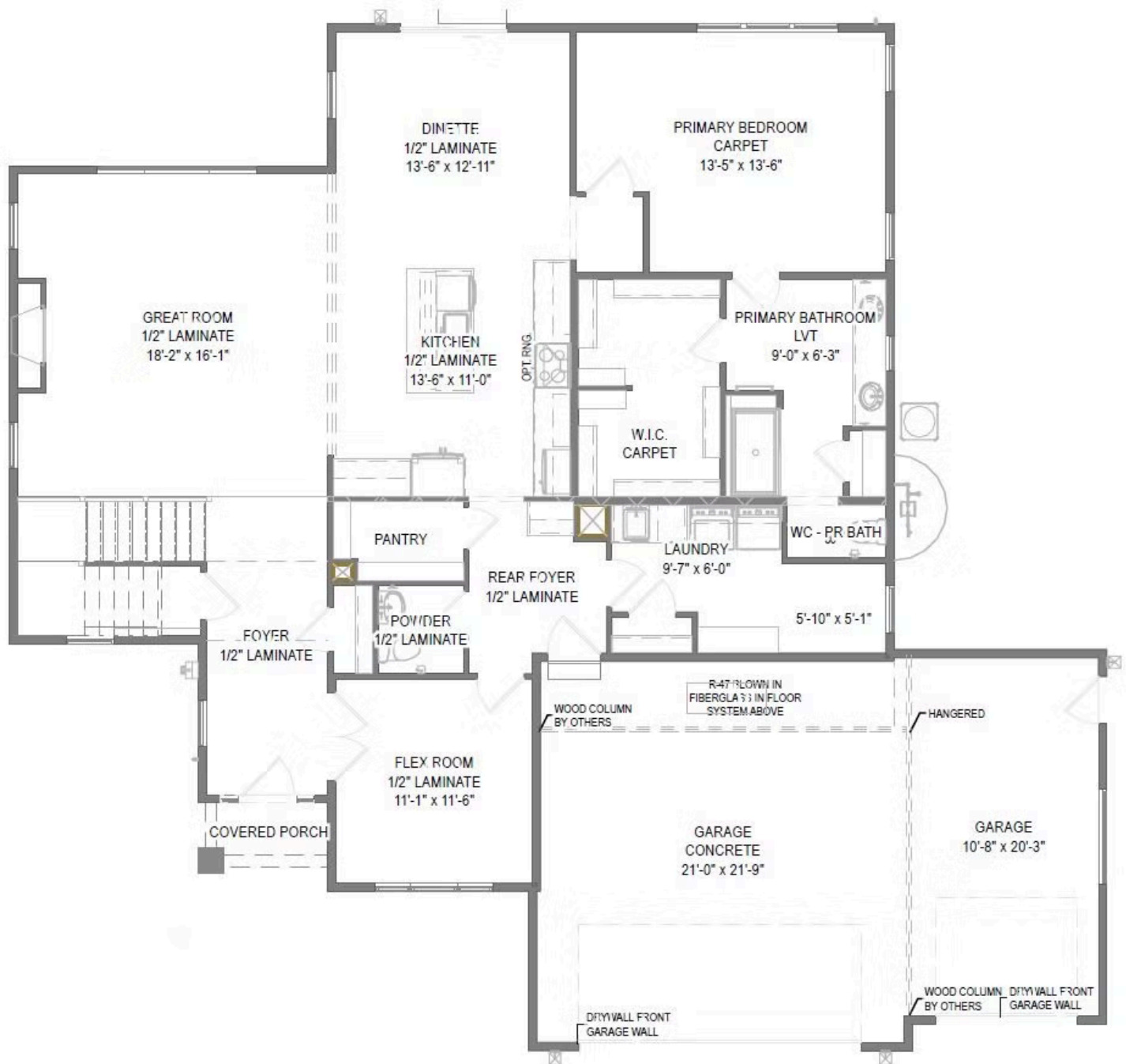
The Birchwood captivates with a grand two-story Foyer. As you move further, under the architectural elegance of the walkway above, the Foyer gives way to a generous living space, Kitchen, and dining area. The Powder Room and Flex Room find their place at the front of the home, while the spacious first-floor Primary Suite lies towards the rear, boasting a sizable walk-in closet and an opulent en suite bathroom. A well-equipped Laundry Room featuring a walk-in closet and extra cabinet space adds utility to the first floor. The second floor hosts a tastefully designed walkway leading to a loft, three additional bedrooms, and a full bathroom, creating a comfortable and practical living space.

W259N5967 Amberwood Ct

Lisbon, WI 53089

TIM O'BRIEN
homes

Call Today
(262) 600-3769



The information, text, graphics and links provided herein are provided by Tim O'Brien Homes as a convenience to its customers. Tim O'Brien Homes does not guarantee the accuracy or completeness of the information, text, graphics, links and other items contained on this website or any other website. All prices, promotions and specifications are subject to change at any time without notice based on the discretion of Tim O'Brien Homes.

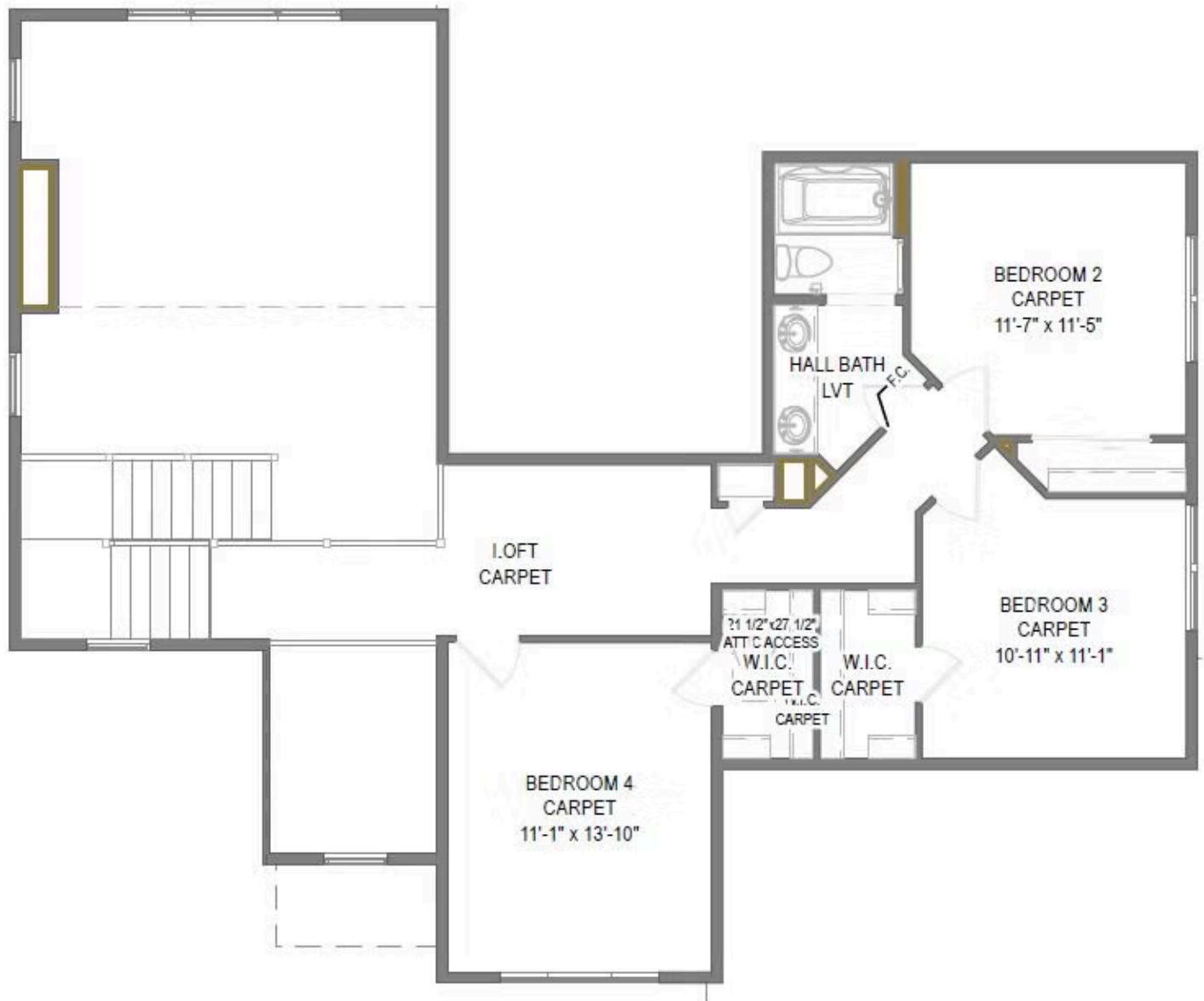


W259N5967 Amberwood Ct

Lisbon, WI 53089

TIM O'BRIEN
homes

Call Today
(262) 600-3769



The information, text, graphics and links provided herein are provided by Tim O'Brien Homes as a convenience to its customers. Tim O'Brien Homes does not guarantee the accuracy or completeness of the information, text, graphics, links and other items contained on this website or any other website. All prices, promotions and specifications are subject to change at any time without notice based on the discretion of Tim O'Brien Homes.

