

The Lavender

October Fields

TIM O'BRIEN
homes

Call Today
(262) 600-3769



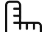
Call for Price

Home Style: Ranch

4 Elevations Available

 3 Bedroom

 2 Bathrooms

 1,734 Sq. Ft.

 2 - 3 Car Garage

 46 HERS Score

The Lavender is designed for everyday comfort with a layout that keeps life simple, organized, and connected. At the heart of the home, the open kitchen, dinette, and great room create a bright, welcoming space that works just as well for quiet nights as it does for hosting friends and family. The kitchen features a central island, generous cabinetry, and a walk-in pantry, all within easy reach of the rear foyer and garage for convenient unloading and storage. Tucked privately at the back of the home, the primary suite offers a relaxing retreat with a spacious bedroom, walk-in closet, and a well-appointed bath. The nearby laundry room adds another layer of convenience, keeping daily routines efficient and out of sight. On the opposite side of the home, two secondary bedrooms and a full hall bath provide comfortable space for family members or guests. This separation creates a sense of privacy while still keeping everyone connected. A welcoming front foyer and covered porch set the tone from the moment you arrive, while thoughtful details throughout the home support how you live day to day. The Lavender balances open living with private spaces, making it a practical and inviting choice for a wide range of lifestyles.



The information, text, graphics and links provided herein are provided by Tim O'Brien Homes as a convenience to its customers. Tim O'Brien Homes does not guarantee the accuracy or completeness of the information, text, graphics, links and other items contained on this website or any other website. All prices, promotions and specifications are subject to change at any time without notice based on the discretion of Tim O'Brien Homes.



The Lavender

October Fields

Call Today
(262) 600-3769

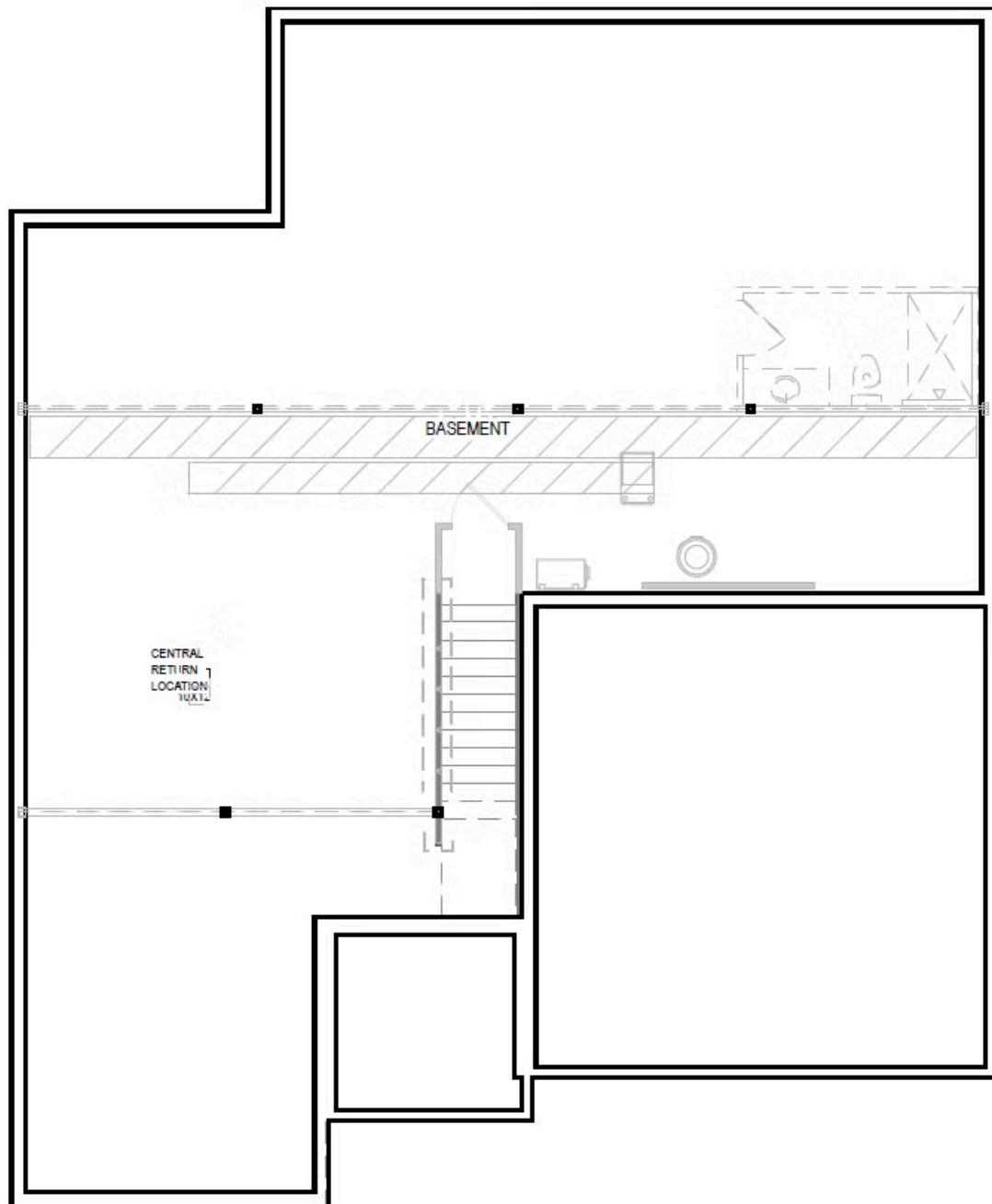


First Floor

The Lavender

October Fields

Call Today
(262) 600-3769



Basement