

9875 N Cygnet Ct

Mequon, WI 53097

TIM O'BRIEN
homes

Call Today
(262) 239-7342

UNDER CONSTRUCTION

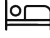





PRICED AT

\$794,900

Neighborhood: Swan Ridge Farms
9618 N Swan Rd, Mequon, WI

Home Plan: The Maple

 4 Bedrooms
 2.5 Bathrooms
 2,868 Sq. Ft.
 3 Car Garage

The Maple is a moderately sized two-story home plan with a thoughtful design. The main living space has a large, open-concept Kitchen with a spacious pantry and Great Room with a dinette at the back of the home. There is a Flex Room located just off the Front Foyer. The Rear Foyer includes the powder room and a walk-in closet. The stairs to the second level are located off the kitchen. The second level has 3 secondary bedrooms, laundry room, full bathroom, and the primary suite with a large walk-in closet.

9875 N Cygnet Ct

Mequon, WI 53097

TIM O'BRIEN
homes

Call Today
(262) 239-7342



The information, text, graphics and links provided herein are provided by Tim O'Brien Homes as a convenience to its customers. Tim O'Brien Homes does not guarantee the accuracy or completeness of the information, text, graphics, links and other items contained on this website or any other website. All prices, promotions and specifications are subject to change at any time without notice based on the discretion of Tim O'Brien Homes.

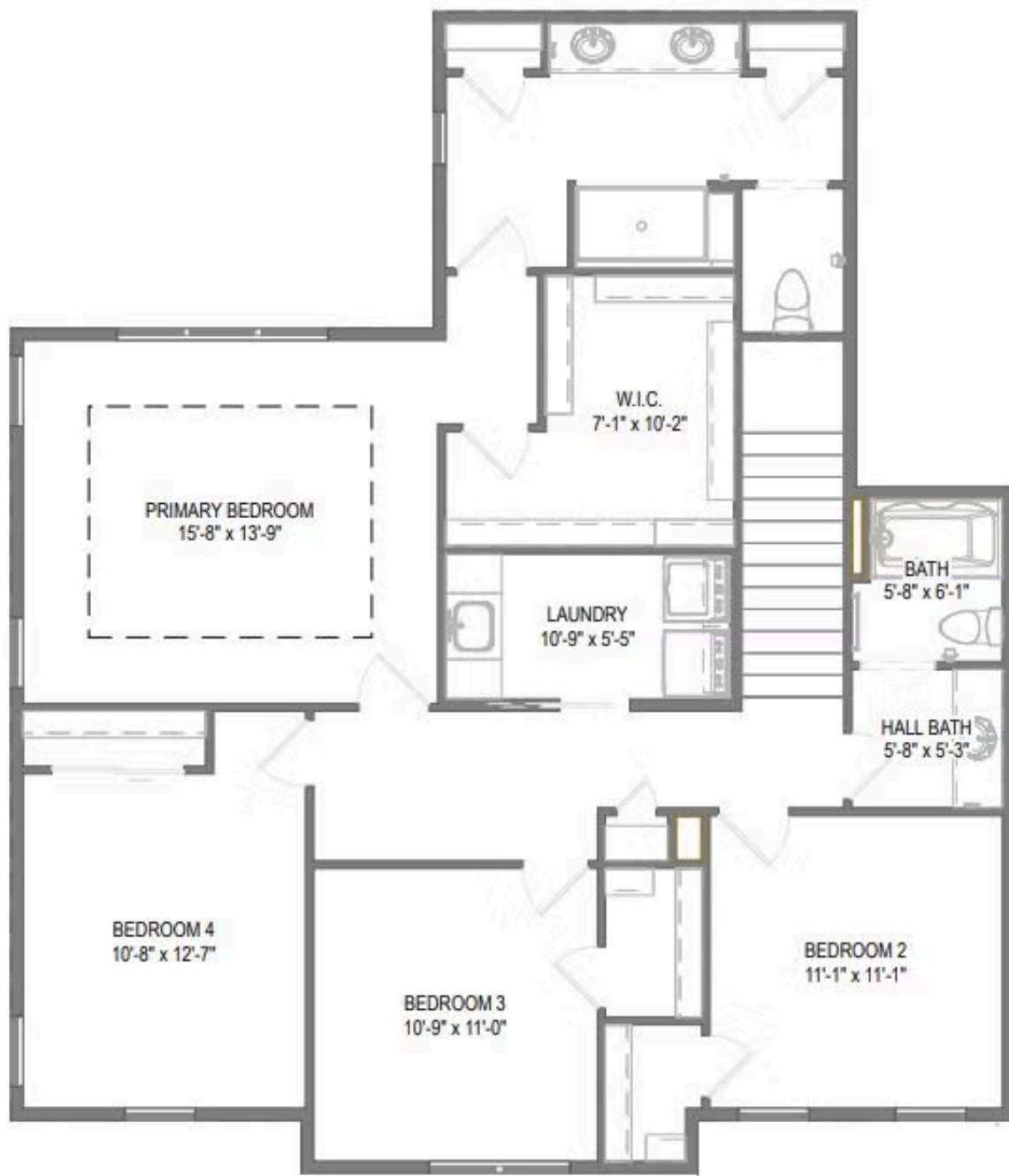


9875 N Cygnet Ct

Mequon, WI 53097

TIM O'BRIEN
homes

Call Today
(262) 239-7342



The information, text, graphics and links provided herein are provided by Tim O'Brien Homes as a convenience to its customers. Tim O'Brien Homes does not guarantee the accuracy or completeness of the information, text, graphics, links and other items contained on this website or any other website. All prices, promotions and specifications are subject to change at any time without notice based on the discretion of Tim O'Brien Homes.

