

# 1709 Hammock Lane

Oconomowoc, WI 53066

TIM O'BRIEN  
homes

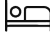



Call Today  
(262) 239-7342



## SOLD

**Neighborhood:** Prairie Creek Ridge  
Oconomowoc, WI

**Home Plan:** The Walnut

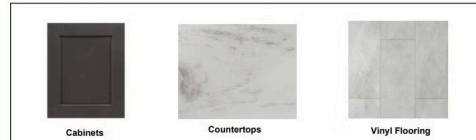
 3 Bedrooms  
 2.5 Bathrooms  
 2,142 Sq. Ft.  
 2.5 Car Garage

The Walnut is a moderately sized ranch plan with three bedrooms and a Flex Room. The angled entry Flex Room is located just off the front foyer, opposite the stairs to the lower level. The plan opens to a large living space, featuring a Great Room, Dinette, and Kitchen with a walk-in pantry. The kitchen is spacious and functional, perfect for cooking up your favorite meals. Just beyond the Kitchen is the Primary Suite, which has two walk-in closets and Primary Bathroom. The additional bedrooms are located at the front of the home and both include walk-in closets.

### EXTERIOR SELECTIONS



### HALL BATH



### KITCHEN



### PLUMBING FIXTURES



### MASTER BATH



### FINISHING TOUCHES



The information, text, graphics and links provided herein are provided by Tim O'Brien Homes as a convenience to its customers. Tim O'Brien Homes does not guarantee the accuracy or completeness of the information, text, graphics, links and other items contained on this website or any other website. All prices, promotions and specifications are subject to change at any time without notice based on the discretion of Tim O'Brien Homes.

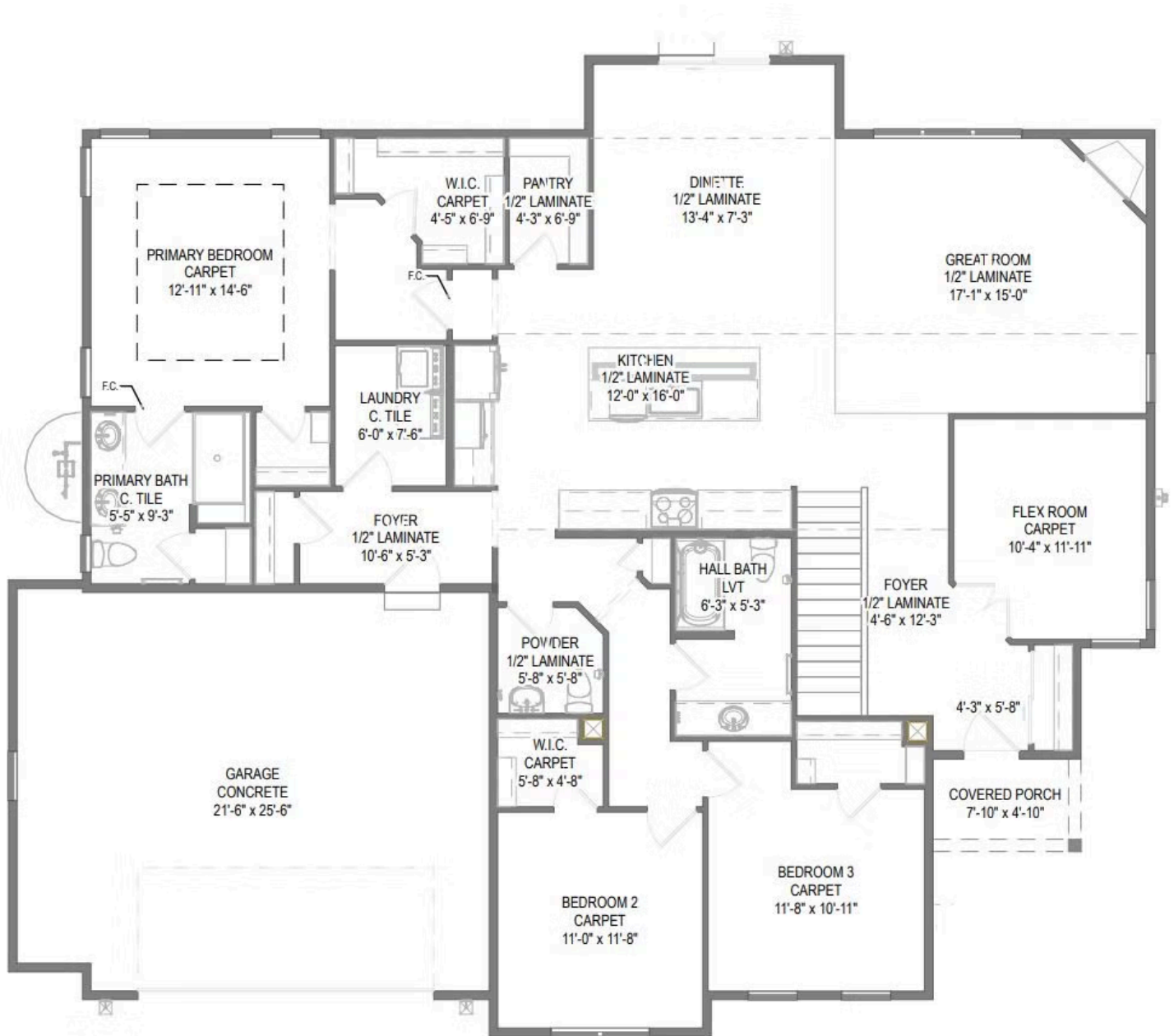


# 1709 Hammock Lane

Oconomowoc, WI 53066

TIM O'BRIEN  
homes

Call Today  
(262) 239-7342



The information, text, graphics and links provided herein are provided by Tim O'Brien Homes as a convenience to its customers. Tim O'Brien Homes does not guarantee the accuracy or completeness of the information, text, graphics, links and other items contained on this website or any other website. All prices, promotions and specifications are subject to change at any time without notice based on the discretion of Tim O'Brien Homes.

