

The Evergreen

The Snyder Farm

TIM O'BRIEN
homes

Call Today
(262) 600-3769



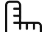
Call for Price

Home Style: Two-Story

3 Elevations Available

 4 - 5 Bedroom

 2.5 Bathrooms

 2,624 Sq. Ft.

 2 - 3 Car Garage

 46 HERS Score

The Evergreen is designed to balance open-concept living with purposeful spaces that support everyday life. The main floor welcomes you with a spacious great room that flows seamlessly into the dining area and kitchen, creating a central gathering space ideal for both daily routines and entertaining. The kitchen features a large island and generous pantry storage, while a nearby flex room offers versatility for a home office, playroom, or quiet retreat. A rear foyer connects the home to the garage helping keep everyday clutter organized and out of sight.

Upstairs, the layout is thoughtfully designed for privacy and functionality. The primary bedroom features a spacious bedroom, walk-in closet, and private bath with dual vanities. Three additional bedrooms, each with ample closet space, share a centrally located hall bath. The second-floor laundry room adds convenience right where it's needed most.



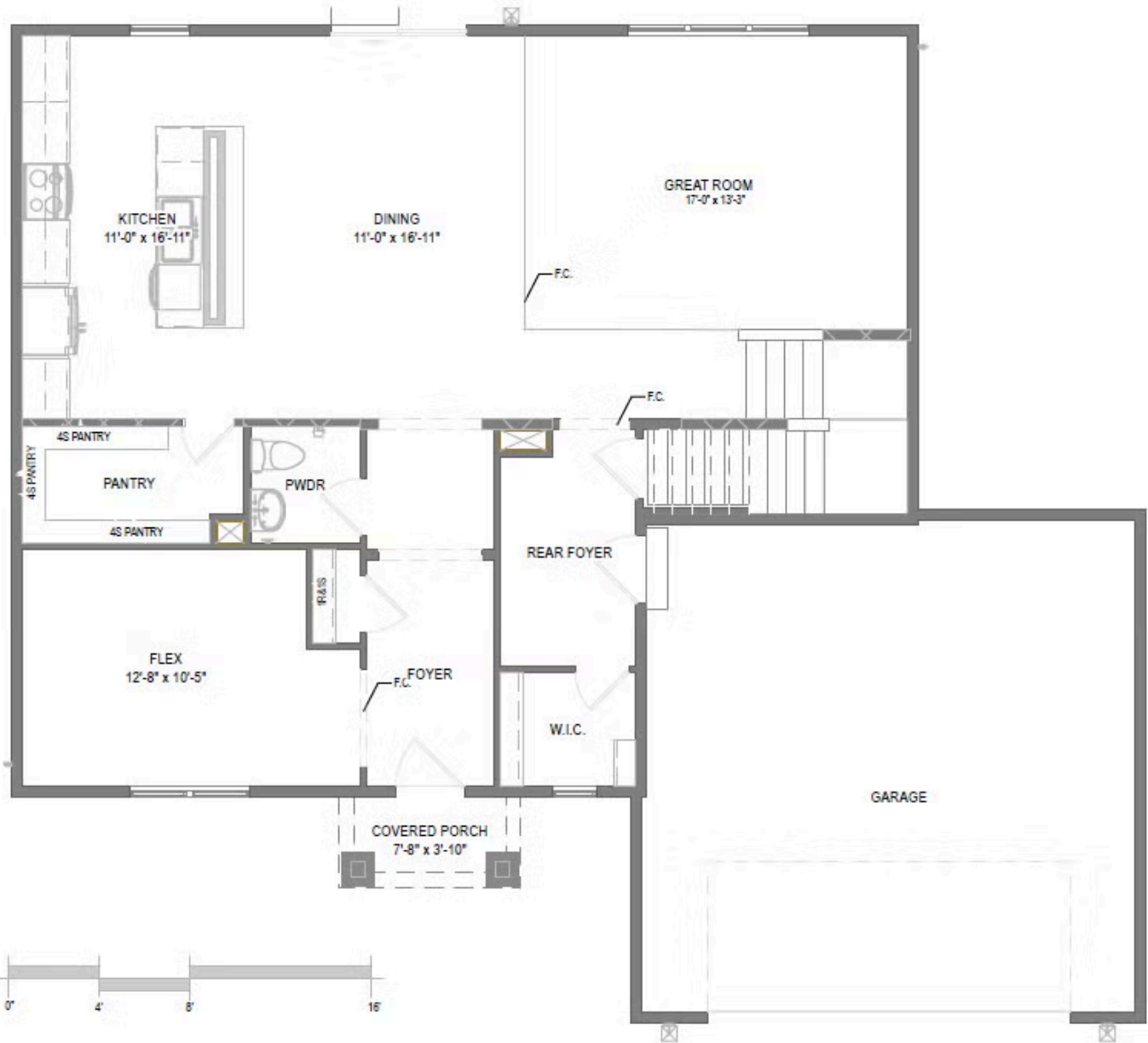
The information, text, graphics and links provided herein are provided by Tim O'Brien Homes as a convenience to its customers. Tim O'Brien Homes does not guarantee the accuracy or completeness of the information, text, graphics, links and other items contained on this website or any other website. All prices, promotions and specifications are subject to change at any time without notice based on the discretion of Tim O'Brien Homes.



The Evergreen

The Snyder Farm

Call Today
(262) 600-3769



First Floor



Second Floor