

The Mulberry

The Snyder Farm

TIM O'BRIEN
homes

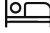
Call Today
(262) 600-3769



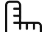
Call for Price

Home Style: Two-Story

3 Elevations Available

 3 - 4 Bedroom

 2.5 Bathrooms

 2,264 - 2,280 Sq. Ft.

 2 - 3 Car Garage

 46 HERS Score

The Mulberry offers a smart, comfortable layout designed for everyday living and effortless entertaining.

On the main floor, the welcoming foyer opens to a versatile flex room - perfect for a home office, playroom, or cozy retreat. The heart of the home features an open-concept kitchen with a central island, seamlessly connecting to the dinette and spacious great room, creating an ideal flow for gatherings. A walk-in pantry, convenient powder room, and rear foyer off the garage add functionality and organization to busy routines.

Upstairs, the private primary suite provides a relaxing escape with a generous walk-in closet and a well-appointed en-suite bath. Two additional bedrooms, each with walk-in closets, share a centrally located hall bath. A second-floor laundry room adds everyday convenience right where you need it most.

With its thoughtful layout, flexible spaces, and balance of openness and privacy, the Mulberry is designed to adapt to the way you live - today and in the years ahead.



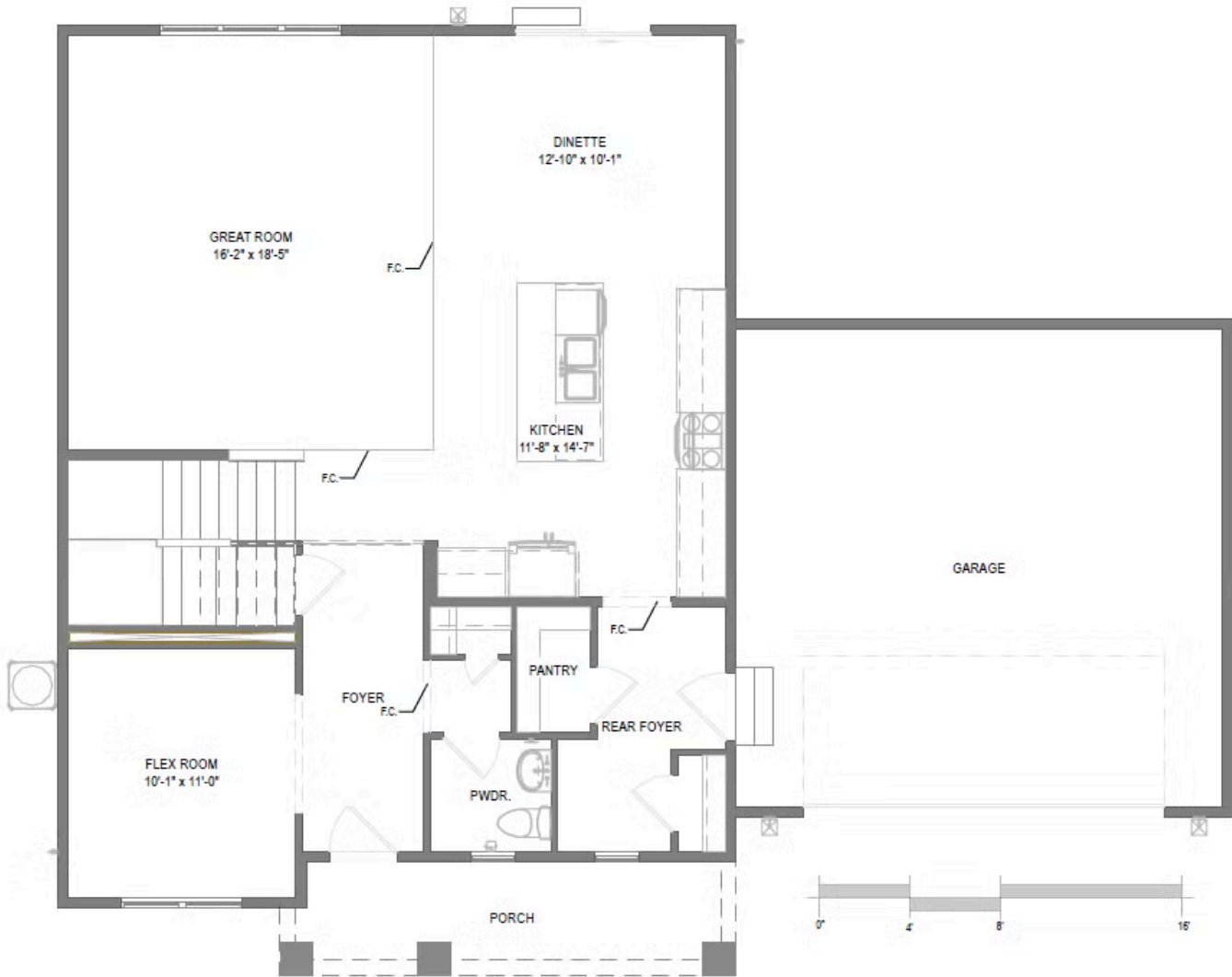
The information, text, graphics and links provided herein are provided by Tim O'Brien Homes as a convenience to its customers. Tim O'Brien Homes does not guarantee the accuracy or completeness of the information, text, graphics, links and other items contained on this website or any other website. All prices, promotions and specifications are subject to change at any time without notice based on the discretion of Tim O'Brien Homes.



The Mulberry

The Snyder Farm

Call Today
(262) 600-3769



First Floor

The Mulberry

The Snyder Farm

Call Today
(262) 600-3769



Second Floor