

The Evergreen

Vista Run

TIM O'BRIEN
homes

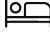
Call Today
(262) 239-7342



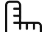
Call for Price

Home Style: Two-Story

7 Elevations Available

 4 - 5 Bedroom

 2.5 Bathrooms

 2,432 Sq. Ft.

 2 - 3 Car Garage

 46 HERS Score

The Evergreen features a welcoming two-story Foyer with a large flex room at the front of the home. Just past the Flex Room is a Powder Room before the entire floor plan opens to the living space at the back of the home. On one side is the expansive Kitchen, which has an island surrounded by L-shaped perimeter cabinets and a large walk-in pantry. On the other side of the main living space is the Great Room, which is separated from the Kitchen by the Dinette. The Rear Foyer is located near the stairs to the upper level and features a walk-in closet. The second floor has 3 secondary bedrooms, Laundry Room, Full Bathroom, and Owner's Suite with an oversized walk-in closet.



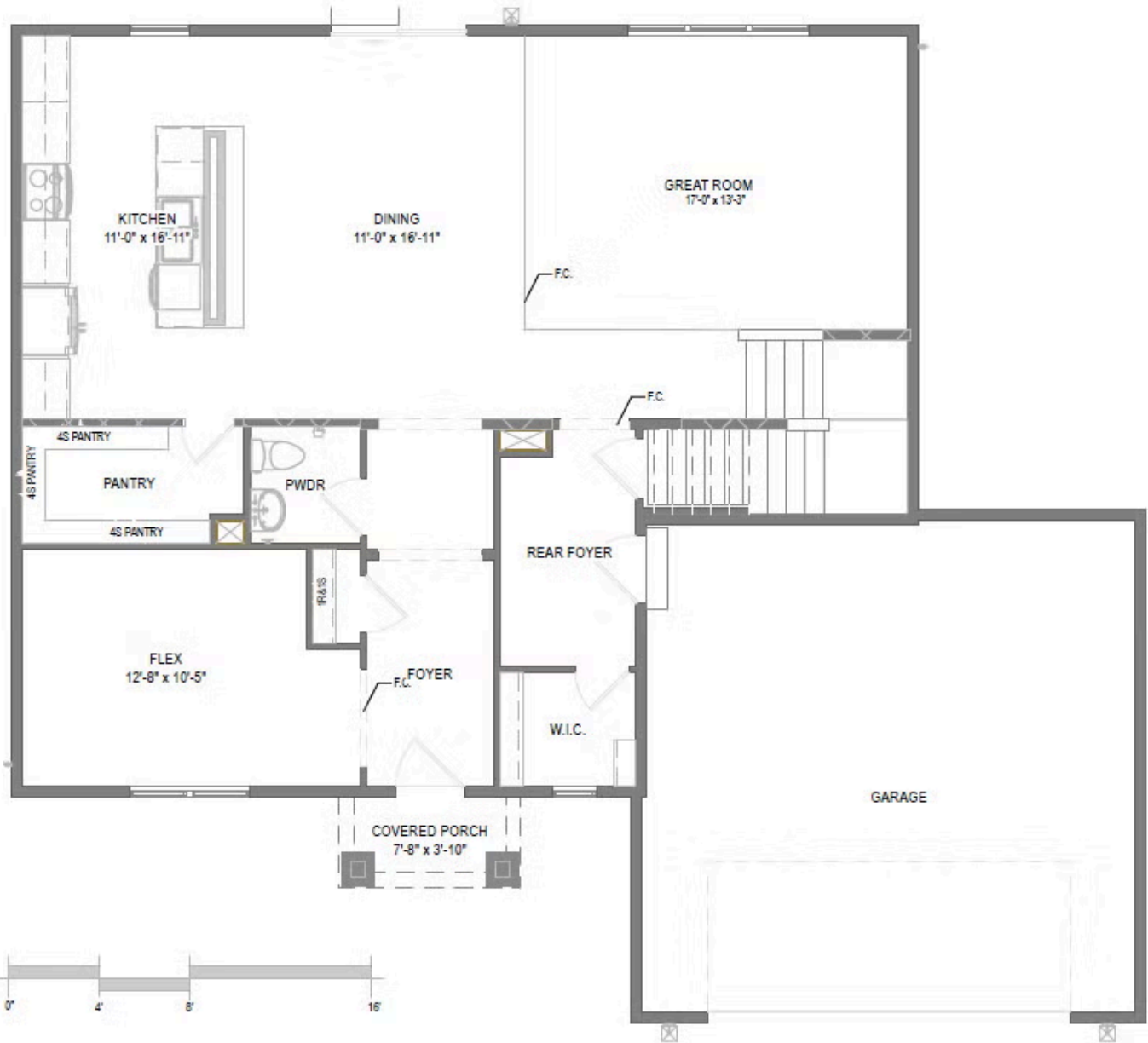
The information, text, graphics and links provided herein are provided by Tim O'Brien Homes as a convenience to its customers. Tim O'Brien Homes does not guarantee the accuracy or completeness of the information, text, graphics, links and other items contained on this website or any other website. All prices, promotions and specifications are subject to change at any time without notice based on the discretion of Tim O'Brien Homes.



The Evergreen

Vista Run

Call Today
(262) 239-7342



First Floor



Second Floor