

The Juneberry

Vista Run

TIM O'BRIEN
homes

Call Today
(262) 239-7342



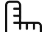
Call for Price

Home Style: Two-Story

3 Elevations Available

 4 Bedroom

 2.5 Bathrooms

 2,590 Sq. Ft.

 2 - 3 Car Garage

 46 HERS Score

Introducing the Juneberry - a spacious two-story home extending over 2600 square feet. This welcoming residence kicks off with a large flex room conveniently positioned at the front, perfect for a home office, study, or den. Journey further into the home, and you'll encounter the main living area. This inviting space flows naturally into a cozy dining area and a modern kitchen. Equipped with a handy pantry, the kitchen also offers direct access to the rear foyer for added convenience. As you move to the second level, the Primary Suite is your first port of call, offering a comforting retreat. Bask in the luxury of the private bathroom and appreciate the ample storage offered by a generous walk-in closet. The upstairs also features a well-placed laundry room, adding practicality to your everyday chores. This level also accommodates three additional bedrooms, two of which offer their own walk-in closets - a dream for families or guest accommodation. One of the standout features of the Juneberry is the additional family room. This flexible space provides homeowners the opportunity to adapt to their needs - be it for entertainment, relaxation, or hobbies.



The information, text, graphics and links provided herein are provided by Tim O'Brien Homes as a convenience to its customers. Tim O'Brien Homes does not guarantee the accuracy or completeness of the information, text, graphics, links and other items contained on this website or any other website. All prices, promotions and specifications are subject to change at any time without notice based on the discretion of Tim O'Brien Homes.



The Juneberry

Vista Run

Call Today
(262) 239-7342

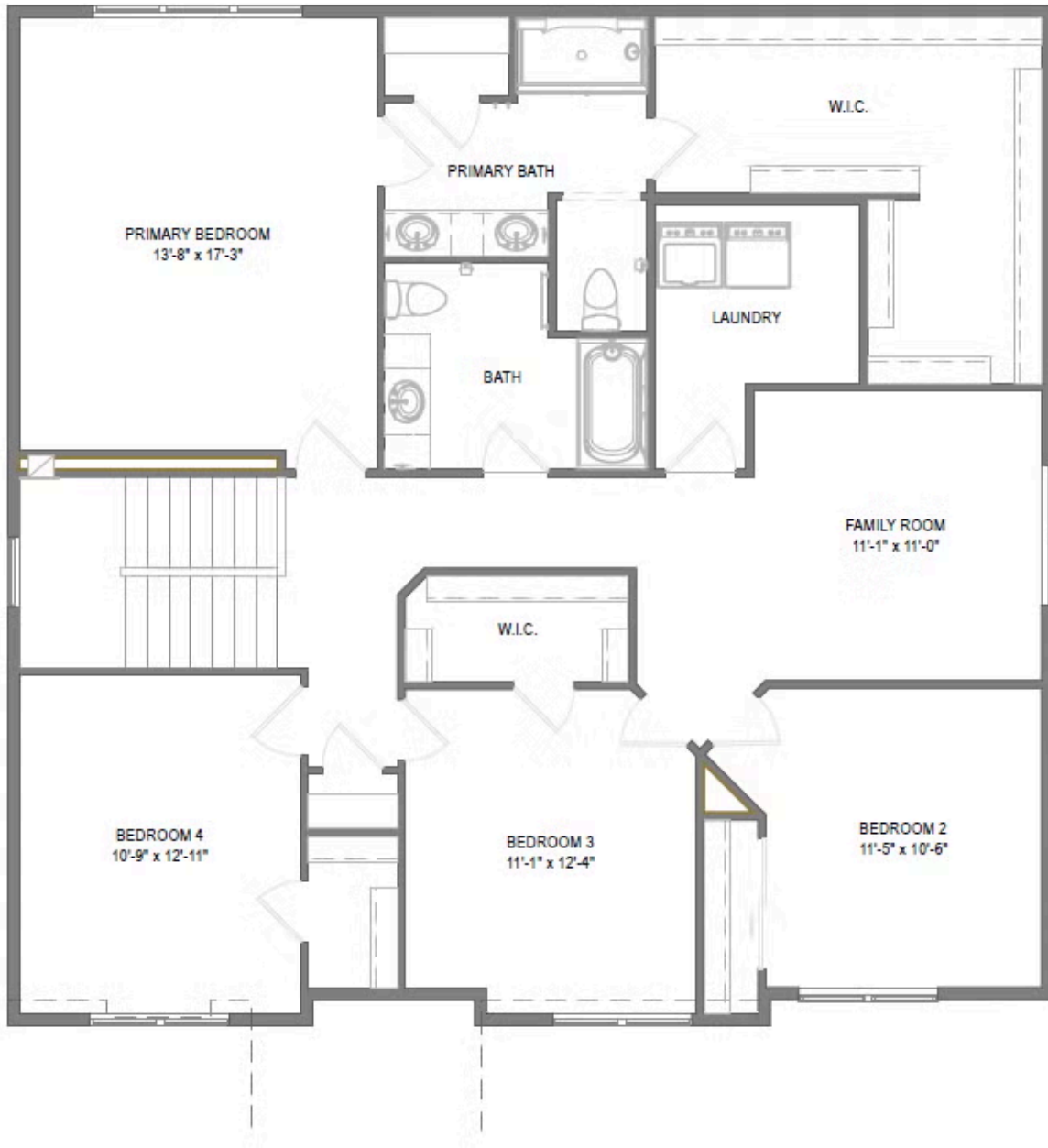


First Floor

The Juneberry

Vista Run

Call Today
(262) 239-7342



Second Floor